

# SPLINE TYPE FLEXIBLE COUPLINGS

# SDP/SI

PHONE: 516.328.3300 • FAX: 516.326.8827 • WWW.SDP-SI.COM

## > MATERIAL:

- Spline - Polyurethane
- Hub - 16, 20 & 25 Series - Zinc Alloy Die Casting
- 32 Series - Sintered Metal

## > MISALIGNMENT COMPENSATION:

- Max. Angular Offset: 2°
- Max. Lateral Offset: 0.2

## > OPERATING TEMPERATURE:

- 20°C to +60°C

## > FEATURES:

- High rpm.
- Electrically Isolated.
- Dampens Shock & Vibration.
- Blind Assembly.
- No Lubrication.

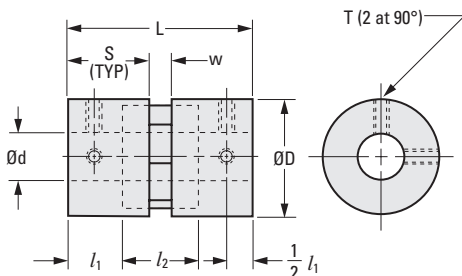
## > SPECIFICATION:

- Bore Tolerance:
  - 3 mm +0.014/0
  - 4, 5 & 6 mm +0.018/0
  - 8 & 10 mm +0.022/0
  - 12 & 14 mm +0.027/0

## > BUILD YOUR OWN COUPLING:

**For Different Bore Combinations:** Select hubs and corresponding spline within the same series.

**For Hubs with the Same Bore:** Select the "Complete Coupling"



The projections shown are per ISO convention.

Coupling Series	Rated Torque Nm	Max. rpm
16	0.5	24000
20	1	19000
25	1.5	15000
32	3	12000

## METRIC COMPONENT

Catalog Number			D Dia.	d Bore H8	L	S	l <sub>1</sub>	l <sub>2</sub>	w	Spline Bore	T Set Screw	Max.** Bore
Complete Coupling	Hub Only	Spline Only										
A 5Z28M1603	A 5D28M1603	A 5R28M16	16	3	27	12	8	11	3	6	M3	8
A 5Z28M1604	A 5D28M1604			4								
A 5Z28M1605	A 5D28M1605			5								
A 5Z28M1606	A 5D28M1606			6								
A 5Z28M1608	A 5D28M1608			8								
A 5Z28M2005	A 5D28M2005	A 5R28M20	20	5	34	15	10	14	4	8	M3	10
A 5Z28M2006	A 5D28M2006			6								
A 5Z28M2008	A 5D28M2008			8								
A 5Z28M2010	A 5D28M2010			10								
A 5Z28M2506	A 5D28M2506	A 5R28M25	25	6	41	18	12	17	5	10	M4	12
A 5Z28M2508	A 5D28M2508			8								
A 5Z28M2510	A 5D28M2510			10								
A 5Z28M2512	A 5D28M2512			12								
A 5Z28M3208	A 5D28M3208	A 5R28M32	32	8	48	21	14	20	6	12	M4	15
A 5Z28M3210	A 5D28M3210			10								
A 5Z28M3212	A 5D28M3212			12								
A 5Z28M3214	A 5D28M3214			14								

\*\* Other bore diameter combinations and bore sizes not exceeding the maximum listed above are available on special order.

