

# SILICONE INSERT COUPLINGS



ZERO BACKLASH  
ELECTRICAL ISOLATION

PHONE: 516.328.3300 • FAX: 516.326.8827 • WWW.SDP-SI.COM



**> MATERIAL:**

**Hub** - Aluminum  
**Insert** - Silicone 40 ShA

**> MAX. OPERATING SPEED:**

5000 rpm

**> OPERATING TEMPERATURE:**

-50°C to +150°C

**> SPECIFICATION:**

$d_1, d_2$  Tolerance:  
6 mm +0.012/0  
8 & 10 mm +0.015/0  
12 to 18 mm +0.018/0

Coupling Size	Max. $\Delta$ Torque N • m	Torsional Stiffness N • m/rad	Approx. Weight grams
19.1	3	35	22
25.4	5.7	65	45
31.8	8	80	120

Service Factor	
Shock & Reversing	2
Nonreversing	1.5
Steady Load	1

$\Delta$ Select the size so that  
(Applicable Torque) x (Service Factor)  
is less than the allowable maximum torque

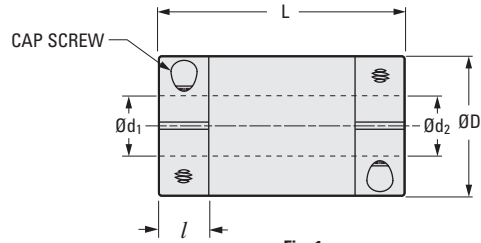
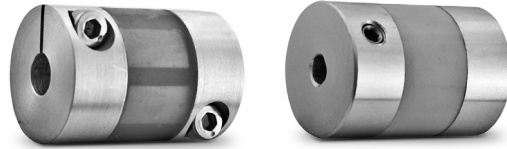


Fig. 1  
Split Type

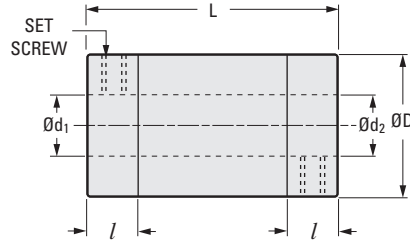


Fig. 2  
Set Screw Type

## METRIC COMPONENT

Catalog Number		D Dia.	$d_1$ Bore H7	$d_2$ Bore H7	L	l	Fig. 1 Cap Screw	Fig. 2 Set Screw	Max.* Bore	Misalignment Compensation	
Split Type	Set Screw Type									Max. Angular Offset	Max. Lateral Offset
Size 19.1											
S54HSAM190606	S54PSAM190606	19.1	6	6	26.5	6.5	M2.5	M4	10	0.6°	0.12
S54HSAM190808	S54PSAM190808		8	8							
S54HSAM191010	S54PSAM191010		10	10							
Size 25.4											
S54HSAM250606	S54PSAM250606	25.4	6	6	38.1	11	M3	M5	12.7	1°	0.15
S54HSAM250808	S54PSAM250808		8	8							
S54HSAM251010	S54PSAM251010		10	10							
S54HSAM251212	S54PSAM251212		12	12							
Size 31.8											
S54HSAM310606	S54PSAM310606	31.8	6	6	57	16	M4	M6	19	1.6°	0.3
S54HSAM310808	S54PSAM310808		8	8							
S54HSAM311010	S54PSAM311010		10	10							
S54HSAM311212	S54PSAM311212		12	12							
S54HSAM311616	S54PSAM311616		16	16							

\*Other bore diameter combinations and bore sizes not exceeding the maximum listed above are available on special order.

6-51  
D805

I  
R  
T  
1  
2  
3  
4  
5  
6  
7  
8  
9  
10  
11  
12  
13  
14  
15  
A