

HELICAL COUPLINGS

SDP/SI

PATENT NO. 3,068,666

PHONE: 516.328.3300 • FAX: 516.326.8827 • WWW.SDP-SI.COM

> MATERIAL:

303 Stainless Steel

> MISALIGNMENT COMPENSATION:

Max. Angular Offset: 5°
Max. Lateral Offset: 0.075
Max. Axial Motion: 0

> FEATURES:

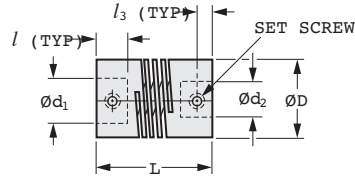
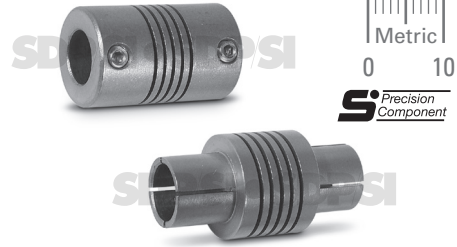
One-Piece Construction
 Constant Velocity
 Adapts to High- and Low-Speed Applications

> SPECIFICATIONS:

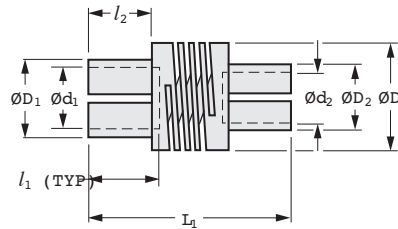
d₁, d₂ Tolerance:
 2 & 3 mm +0.010/0
 4, 5 & 6 mm +0.012/0

D₁, D₂ Dia. Tolerance:
 3.6, 4.6 & 5.6 mm 0/-0.018
 6.6 & 7.6 mm 0/-0.022

Other sizes and bores available on special order.



Set Screw Type



Clamp Type

| METRIC COMPONENT | | d ₁ Bore H7 | d ₂ Bore H7 | D ₁ Dia. h8 | D ₂ Dia. h8 | D Dia. | Working Torque N • m | Torsional Flexibility Arc Sec./ N • m |
|------------------|----------------|------------------------------|------------------------------|------------------------------|------------------------------|-----------|----------------------------|--|
| Set Screw Type | Clamp Type | | | | | | | |
| S50HS9M1P02P02 | S50HS9M1C02C02 | 2 | 2 | 3.6 | 3.6 | 6.35 | 0.14 | 18.9 |
| S50HS9M1P02P03 | S50HS9M1C02C03 | | 3 | | 4.6 | | | |
| S50HS9M1P03P03 | S50HS9M1C03C03 | 3 | 3 | 4.6 | 4.6 | 12.7 | 0.56 | 3.5 |
| S50HS9M2P03P03 | S50HS9M2C03C03 | | 3 | | 4.6 | | | |
| S50HS9M2P03P04 | S50HS9M2C03C04 | 3 | 4 | 4.6 | 5.6 | 12.7 | 0.56 | 3.5 |
| S50HS9M2P03P05 | S50HS9M2C03C05 | | 5 | | 6.6 | | | |
| S50HS9M2P03P06 | S50HS9M2C03C06 | 3 | 6 | 4.6 | 7.6 | 12.7 | 0.56 | 3.5 |
| S50HS9M2P04P04 | S50HS9M2C04C04 | | 4 | | 5.6 | | | |
| S50HS9M2P04P05 | S50HS9M2C04C05 | 4 | 5 | 5.6 | 6.6 | 12.7 | 0.56 | 3.5 |
| S50HS9M2P04P06 | S50HS9M2C04C06 | | 6 | | 7.6 | | | |
| S50HS9M2P05P05 | S50HS9M2C05C05 | 5 | 5 | 6.6 | 6.6 | 12.7 | 0.56 | 3.5 |
| S50HS9M2P05P06 | S50HS9M2C05C06 | | 6 | | 7.6 | | | |
| S50HS9M2P06P06 | S50HS9M2C06C06 | 6 | 6 | 7.6 | 7.6 | 12.7 | 0.56 | 3.5 |

| Coupling Series (Ref.) | | l | L | l ₁ | l ₂ | l ₃ | L ₁ | Set Screw |
|------------------------|--------------|---|----|----------------|----------------|----------------|----------------|--------------|
| Set Screw Type | Clamp Type | | | | | | | |
| S50HS9M1P... | S50HS9M1C... | 3 | 10 | 3 | 3 | 1.6 | 10 | M2 |
| S50HS9M2P... | S50HS9M2C... | 6 | 20 | 8 | 7 | 2.4 | 24 | M3 |

