

FLEXIBLE HELICAL COUPLINGS

SDPSI

SET SCREW TYPE
ALUMINUM
ZERO BACKLASH

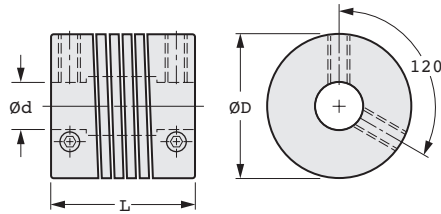
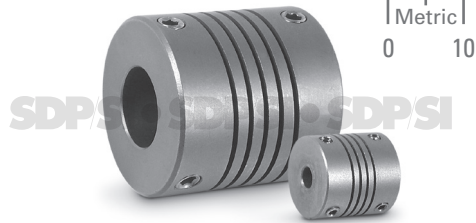
PHONE: 516.328.3300 • FAX: 516.326.8827 • WWW.SDP-SI.COM

› **MATERIAL:**
7075-T6 Aluminum

› **MISALIGNMENT COMPENSATION:**
Max. Angular Offset: 5°
Max. Lateral Offset: 0.25
Max. Axial Motion: ± 0.25

› **FEATURES:**
One-Piece Construction
Shaft Relief
High Fatigue Resistance
Constant Velocity
Adapts to High- and Low-Speed Applications

Bore diameter combinations are available on special order.



The projections shown are per ISO convention.

METRIC COMPONENT

Catalog Number	d Bore +0.05 0	D Dia.	L Length ± 0.25	Screw Size	Momentary* Dynamic Torque N • m	Torsional Flexibility Arc Min./ N • m	Inertia Δ $\times 10^{-4}$ kg cm sec. ²
S50HAWM15P0303	3	15	20	M2.5	0.71	306	0.025
S50HAWM15P0404	4				0.66	432	
S50HAWM15P0505	5				0.59	600	
S50HAWM20P0404	4	20	20	M3	1.3	162	0.079
S50HAWM20P0505	5				1.2	210	
S50HAWM20P0606	6				1.1	270	
S50HAWM25P0606	6	25	24	M4	2.9	90	0.24
S50HAWM25P0707	7				2.8	108	
S50HAWM25P0808	8				2.6	132	
S50HAWM25P0909	9	30	30	M5	2.4	168	0.6
S50HAWM25P1010	10				2.2	210	
S50HAWM30P0909	9				4.9	66	
S50HAWM30P1010	10	30	30	M5	4.6	78	0.6
S50HAWM30P1111	11				4.3	96	
S50HAWM30P1212	12				4	114	

* Torque listed is maximum momentary value.

For NONREVERSING applications, the torque rating is 1/2.

For REVERSING applications, the torque rating is 1/4.

Δ Inertia is based on the smallest standard bore diameter.

I

R

T

1

2

3

4

5

6

7

8

9

10

11

12

13

14

15

A

6-38
D815

REVISED:
05/19/23