

FLEXIBLE HELICAL COUPLINGS

SDPSI

SET SCREW TYPE
STAINLESS STEEL
ZERO BACKLASH

PHONE: 516.328.3300 • FAX: 516.326.8827 • WWW.SDP-SI.COM



> MATERIAL:

17-4PH Stainless Steel

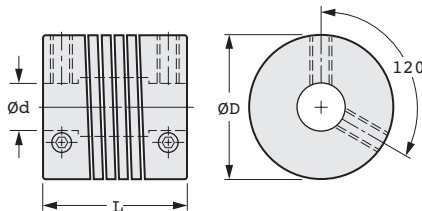
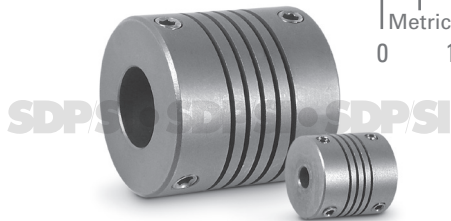
> MISALIGNMENT COMPENSATION:

Max. Angular Offset: 5°
Max. Lateral Offset: 0.25
Max. Axial Motion: ± 0.25

> FEATURES:

One-Piece Construction
Shaft Relief
High Fatigue Resistance
Constant Velocity
Adapts to High- and Low-Speed Applications

Bore diameter combinations are available on special order.



The projections shown are per ISO convention.

METRIC COMPONENT

Catalog Number	d Bore +0.05 0	D Dia.	L Length ± 0.25	Screw Size	Momentary* Dynamic Torque N • m	Torsional Flexibility Arc Min/ N • m	Inertia** x 10 ⁻⁴ kg cm sec. ²
S50HWWW15P0303	3	15	20	M2.5	1.4	114	0.07
S50HWWW15P0404	4			M3	1.3	156	
S50HWWW15P0505	5				1.2	222	
S50HWWW20P0404	4	20	20	M3	2.6	59.4	0.22
S50HWWW20P0505	5				2.5	78	
S50HWWW20P0606	6				2.3	96	
S50HWWW25P0606	6	25	24	M4	5.7	32.4	0.66
S50HWWW25P0707	7				5.5	39.6	
S50HWWW25P0808	8				5.1	49.2	
S50HWWW25P0909	9				4.7	60	
S50HWWW25P1010	10				4.3	78	
S50HWWW30P0909	9	30	30	M5	9.5	24	1.7
S50HWWW30P1010	10				8.9	28.8	
S50HWWW30P1111	11				8.3	34.8	
S50HWWW30P1212	12				7.7	42	

* Torque listed is maximum momentary value:

For NONREVERSING applications, the torque rating is 1/2.

For REVERSING applications, the torque rating is 1/4.

** Inertia is based on the smallest standard bore diameter.

