

SPLIT TYPE HUB
ALUMINUM
ZERO BACKLASH

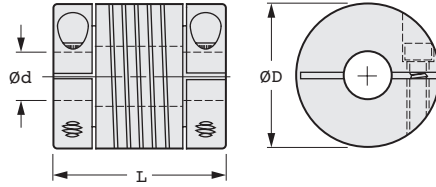
PHONE: 516.328.3300 • FAX: 516.326.8827 • WWW.SDP-SI.COM

> MATERIAL:
7075-T6 Aluminum

> MISALIGNMENT COMPENSATION:
Max. Angular Offset: 5°
Max. Lateral Offset: 0.25
Max. Axial Motion: ± 0.25

> FEATURES:
One-Piece Construction
Integral Clamp
Shaft Relief
High Fatigue Resistance
Constant Velocity
Adapts to High- and Low-Speed Applications

Bore diameter combinations are available on special order.



The projections shown are per ISO convention.

METRIC COMPONENT

Catalog Number	d Bore +0.05 0	D Dia.	L Length ± 0.25	Screw Size	Momentary* Dynamic Torque N • m	Torsional Flexibility Arc Min./ N • m	Inertia Δ $\times 10^{-4}$ kg cm sec. ²
S50HAWM15H0303	3	15	22	M2	0.71	306	0.028
S50HAWM15H0404	4				0.66	432	
S50HAWM15H0505	5				0.59	600	
S50HAWM20H0404	4	20	28	M3	1.3	162	0.11
S50HAWM20H0505	5				1.2	210	
S50HAWM20H0606	6				1.1	270	
S50HAWM25H0606	6	25	30	M3	2.9	90	0.3
S50HAWM25H0707	7				2.8	108	
S50HAWM25H0808	8				2.6	132	
S50HAWM25H0909	9	30	38	M4	2.4	168	0.78
S50HAWM25H1010	10				2.2	210	
S50HAWM30H0909	9				4.9	66	
S50HAWM30H1010	10	30	38	M4	4.6	78	0.78
S50HAWM30H1111	11				4.3	96	
S50HAWM30H1212	12				4	114	

* Torque listed is maximum momentary value.
For NONREVERSING applications, the torque rating is 1/2.
For REVERSING applications, the torque rating is 1/4.
 Δ Inertia is based on the smallest standard bore diameter.

I
R
T
1
2
3
4
5
6
7
8
9
10
11
12
13
14
15
A