

SPLIT TYPE HUB
STAINLESS STEEL
ZERO BACKLASH

PHONE: 516.328.3300 • FAX: 516.326.8827 • WWW.SDP-SI.COM

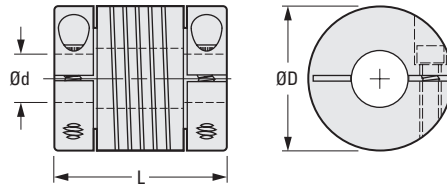
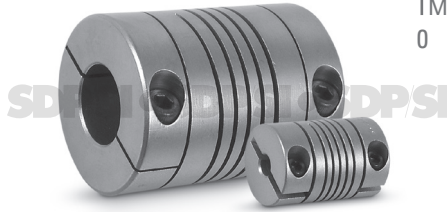


› **MATERIAL:**
17-4PH Stainless Steel

› **MISALIGNMENT COMPENSATION:**
Max. Angular Offset: 5°
Max. Lateral Offset: 0.25
Max. Axial Motion: ± 0.25

› **FEATURES:**
One-Piece Construction.
Integral Clamp.
Shaft Relief.
High Fatigue Resistance.
Constant Velocity.
Adapts to High- and Low-Speed Applications.

Bore diameter combinations are available on special order.



The projections shown are per ISO convention.

METRIC COMPONENT

| Catalog Number | d Bore +0.05 0 | D Dia. | L Length ± 0.25 | Screw Size | Momentary* Dynamic Torque N • m | Torsional Flexibility Arc Min./ N • m | Inertia** x 10 ⁻⁴ kg cm sec. ² |
|----------------|----------------------|--------|--------------------|------------|--|--|---|
| S50HWWW15H0303 | 3 | 15 | 22 | M2 | 1.4 | 114 | 0.078 |
| S50HWWW15H0404 | 4 | | | | 1.3 | 156 | |
| S50HWWW15H0505 | 5 | 20 | 28 | M3 | 1.2 | 222 | 0.32 |
| S50HWWW20H0404 | 4 | | | | 2.6 | 59.4 | |
| S50HWWW20H0505 | 5 | | | | 2.5 | 78 | |
| S50HWWW20H0606 | 6 | | | | 2.3 | 96 | |
| S50HWWW25H0606 | 6 | 25 | 30 | M3 | 5.7 | 32.4 | 0.84 |
| S50HWWW25H0707 | 7 | | | | 5.5 | 39.6 | |
| S50HWWW25H0808 | 8 | | | | 5.1 | 49.2 | |
| S50HWWW25H0909 | 9 | | | | 4.7 | 60 | |
| S50HWWW25H1010 | 10 | | | | 4.3 | 78 | |
| S50HWWW30H0909 | 9 | | | | 9.5 | 24 | |
| S50HWWW30H1010 | 10 | 30 | 38 | M4 | 8.9 | 28.8 | 2.2 |
| S50HWWW30H1111 | 11 | | | | 8.3 | 34.8 | |
| S50HWWW30H1212 | 12 | | | | 7.7 | 42 | |

* Torque listed is maximum momentary value:
For NONREVERSING applications, the torque rating is 1/2.
For REVERSING applications, the torque rating is 1/4.
** Inertia is based on the smallest standard bore diameter.

