

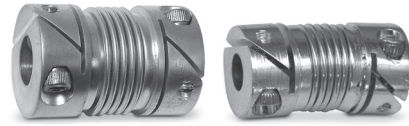
ZERO BACKLASH
EASY INSTALLATION
READILY REPOSITIONED

PHONE: 516.328.3300 • FAX: 516.326.8827 • WWW.SDP-SI.COM



› MATERIAL / FINISH:

- Hubs** - Brass
- Bellows** - Phosphor Bronze
- Socket Head Screws** - 300 Series Stainless Steel
- Finish** - Tin Plate

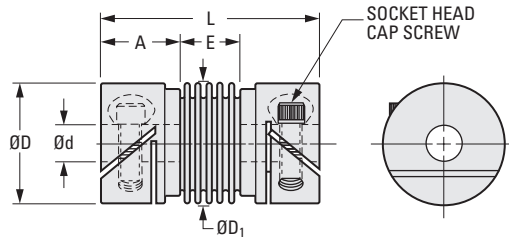


› MISALIGNMENT COMPENSATION:

Max. Lateral Offset: 0.4

› FEATURES:

- Absorbs end play in shafts
- Allows looser tolerances in mounting components
- Corrects for angular and parallel axis misalignment
- Constant angular velocity
- Dampens vibration and noise
- Fairloc® eliminates marred shafts



The projections shown are per ISO convention.

› SPECIFICATION:

- Bore Tolerance:**
- 3 mm +0.014/0
 - 4, 5 & 6 mm +0.018/0
 - 8 & 10 mm +0.022/0
 - 12 mm +0.027/0

Fairloc® hubs require controlled shaft tolerances.
Suggested tolerance according to g6, h6 or h7.

Other bores, finishes available on special order.

METRIC COMPONENT

Catalog Number	d Bore H8	D ₁ Bellows Dia. ± 0.4	E Active Bellows Length Ref.	D Hub Dia. ± 0.25	A Hub Length	L Overall Length ± 1.5	Screw Size
S50FP9MFBC0312	3	11.9	6.4	11	8.5	23.4	M2
S50FP9MFBC0412	4			12.5			
S50FP9MFBC0517	5	16.7	8.5	16	10.5	29.5	M2.5
S50FP9MFBC0617	6				12		
S50FP9MFBC0821	8	21.4	9.3	22	12	33.3	M3
S50FP9MFBC1021	10			25			
S50FP9MFBC1221	12			25			

Catalog Number	Max. Torque N • m	Max. Angular Offset	Max. Axial Motion	Spring Rate For Axial Deflection N/mm	Torsional Deflection @ Max. Load Degrees
S50FP9MFBC0312	0.85	5°	+0.38/-0.75	25.4	1.2°
S50FP9MFBC0412					
S50FP9MFBC0517	1.4	6°	+0.5 /-1	24.2	1.4°
S50FP9MFBC0617					
S50FP9MFBC0821	2.12	6°	+0.65/-1.25	24.2	1.5°
S50FP9MFBC1021					
S50FP9MFBC1221					