

HIGH LOAD
HIGH-SPEED
ISO 3547-1

PHONE: 516.328.3300 • FAX: 516.326.8827 • WWW.SDP-SI.COM

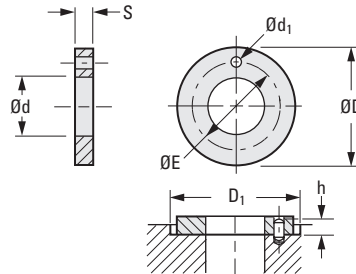


> **MATERIAL:**
T500® Polymer

> **OPERATING TEMPERATURE:**
Continuous: -100°C to +250°C
Intermittent: +315°C

> **FEATURES:**
High Compression Strength
Chemical-Resistant
Very Low Moisture Absorption
Great Wear Resistance

> **SPECIFICATIONS:**
Tensile Strength at 20°C: 1733 kgf/cm² psi
Compressive Strength: 1019 kgf/cm²
Coefficient of Friction (dynamic against steel): 0.09...0.27
PV Value, max. (dry): 808 kgf/cm² x m/min



METRIC COMPONENT

Catalog Number	d +0.25 0	D Dia. 0 -0.25	S Thickness 0 -0.05	E ± 0.12	d ₁ +0.375 +0.125	h ± 0.2	D ₁ +0.12 0
S99GTTM062015	6	20	1.5	13	1.5	1	20
S99GTTM081815	8	18	1.5	13	1.5	1	18
S99GTTM101810	10	18	1.5	*	*	*	18
S99GTTM122415	12	24	1.5	18	1.5	1	24
S99GTTM142615	14	26	1.5	20	2	1	26
S99GTTM152415	15	24	1.5	19.5	1.5	1	24
S99GTTM163015	16	30	1.5	22	2	1	30
S99GTTM183215	18	32	1.5	25	2	1	32
S99GTTM203615	20	36	1.5	28	3	1	36
S99GTTM223815	22	38	1.5	30	3	1	38
S99GTTM244215	24	42	1.5	33	3	1	42
S99GTTM264415	26	44	1.5	35	3	1	44
S99GTTM284815	28	48	1.5	38	4	1	48
S99GTTM325415	32	54	1.5	43	4	1	54
S99GTTM386215	38	62	1.5	50	4	1	62
S99GTTM426615	42	66	1.5	54	4	1	66
S99GTTM487420	48	74	2	61	4	1.5	74
S99GTTM527820	52	78	2	65	4	1.5	78
S99GTTM629020	62	90	2	76	4	1.5	90

* No hole