

NEEDLE ROLLER PRESSBEARINGS

SDPSI

PRESS-FIT INSTALLATION
SELF-ALIGNING TO $\pm 5^\circ$

PHONE: 516.328.3300 • FAX: 516.326.8827 • WWW.SDP-SI.COM



> MATERIAL:

- Bearing** - Drawn Cup Needle
- Housing** - Carbon Steel, Black Oxide Finish

> OPERATING TEMPERATURE:

-30°C to +100°C

> FEATURES:

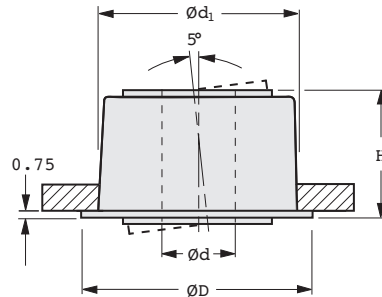
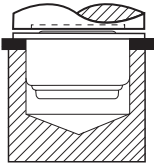
- High-speed, high-load
- No precision holes required
- Major assembly and production savings

> SHAFT REQUIREMENTS:

Any material, HRC 58 to 64 with a 0.4 μm or finer finish.

> INSTALLATION NOTES:

- The punch must be relieved to accommodate protruding insert.
- DO NOT PRESS BEARING ON INSERT!**



SHAFT DIAMETERS

Nominal Shaft Diameter	Maximum Diameter	Minimum Diameter
4	4.000	3.992
6	6.000	5.992
8	8.000	7.991
10	10.000	9.991
12	12.000	11.989
15	15.000	14.989

METRIC COMPONENT

Catalog Number	d Nom. I.D.	d ₁ Panel Hole Dia. +0.07 0	D Flange Dia.	H Height	Max. Speed rpm	Max. Radial Load N
A 7Z47MPSN04M	4	15.9	17.4	10.8	41000	1780
A 7Z47MPSN06M	6				35000	
A 7Z47MPSN08M	8	20.6	22.2	15.2	28000	1830
A 7Z47MPSN10M	10				23000	
A 7Z47MPSN12M	12	27	28.5	19.6	20000	2550
A 7Z47MPSN15M	15	31.8	33.3	21.6	16000	

