

INNER RACES FOR NEEDLE BEARINGS



USED AS INNER RACE ON SOFT SHAFTS
CAN BE USED AS HARDENED BUSHINGS

PHONE: 516.328.3300 • FAX: 516.326.8827 • WWW.SDP-SI.COM



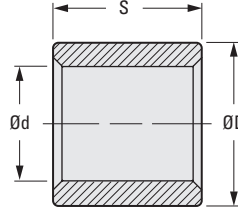
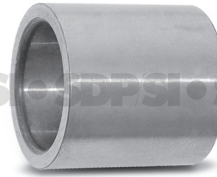
> MATERIAL:

Alloy Steel, Hardened to HRC 58 Min.

> SPECIFICATIONS:

O.D. ground to 0.40 μm AA surface roughness.
Recommended fit tolerances for shaft according to k6.
All corners chamfered for easy assembly.
Wider units available to accommodate shaft translation.

Other sizes available on special order.



TOLERANCE CHART

Dimensions		H6	h5	h6	k6
Over	Incl.				
3	6	+0.008/0	0/-0.005	0/-0.008	+0.009/+0.001
6	10	+0.009/0	0/-0.006	0/-0.009	+0.010/+0.001
10	18	+0.011/0	0/-0.008	0/-0.011	+0.012/+0.001
18	30	+0.013/0	0/-0.009	0/-0.013	+0.015/+0.002

METRIC COMPONENT

Catalog Number	d Bore H6	D Dia. h5	S h6	Use with Bearing No.	
S99RH2MBNR0508	5	8	12	S99NH2MBN0810	
S99RH2MBNR0609	6	9		S99NH2MBN0910	
S99RH2MBNR0710	7	10		S99NH2MBN1010	
S99RH2MBNR0812	8	12		S99NH2MBN1212	
S99RH2MBNR1013	10	13	12.5	S99NH2MBN1312	
S99RH2MBNR1014		14	12	S99NH2MBN1412	
S99RH2MBNR1215	12	15	12	S99NH2MBN1512	
S99RH2MBNR1216		16		S99NH2MBN1612	
S99RH2MBNR1417	14	17	17	S99NH2MBN1712	
S99RH2MBNR1518	15	18	16	S99NH2MBN1812	
S99RH2MBNR1520		20	12	S99NH2MBN2012	
S99RH2MBNR1722		17	22	13	S99NH2MBN2212
S99RH2MBNR2025		20	25	16	S99NH2MBN2512

- I
- R
- T
- 1
- 2
- 3
- 4
- 5
- 6
- 7
- 8
- 9
- 10
- 11
- 12
- 13
- 14
- 15
- 16