

# SINTERED BRONZE PRESSBEARINGS

# SDPSI

PRESS-FIT INSTALLATION  
 SELF-ALIGNING TO  $\pm 5^\circ$   
 SELF-LUBRICATING

PHONE: 516.328.3300 • FAX: 516.326.8827 • WWW.SDP-SI.COM



**> MATERIAL:**

**Bearing** - Oil-Impregnated Sintered Bronze  
**Retainer** - Carbon Steel, Black Oxide Finish

**> OPERATING TEMPERATURE:**

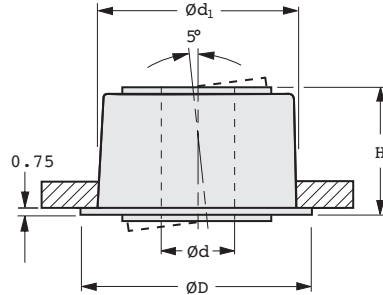
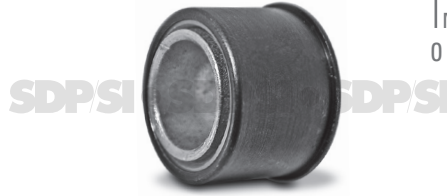
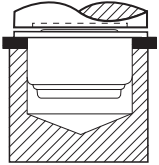
-29°C to +93°C

**> SHAFT REQUIREMENTS:**

Any material, HRB 95 min., with a 0.4  $\mu\text{m}$  or finer finish.

**> INSTALLATION NOTES:**

1. The punch must be relieved to accommodate protruding insert.
2. **DO NOT PRESS BEARING ON INSERT!**



## METRIC COMPONENT

Catalog Number	d Nom. I.D.	Actual I.D. +0.02 0	d <sub>1</sub> Panel Hole Dia. +0.07 0	D Flange Dia.	H Height	Max. Speed rpm	Max. Radial Load N
A 7Z41MPSB04M	4	4.01	12.7	14.2	9.6	24170	800
A 7Z41MPSB06M	6	6.02				16110	1530
A 7Z41MPSB08M	8	8.02	15.9	17.4	10.8	12120	1850
A 7Z41MPSB10M	10	10.02				9700	1850
A 7Z41MPSB12M	12	12.03	20.6	22.2	15.2	8060	2550
A 7Z41MPSB15M	15	15.03	27	28.5	19.6	6460	7000

1

2

3

4

5

6

7

8

9

10

11

12

13

14

15

16

17

18

19

20