

LINEAR BALL BEARINGS • CLOSED TYPE



LOW FRICTION COEFFICIENT
HIGH POSITIONING ACCURACY
HIGH LOAD CAPACITY
QUIET MOVEMENT
LONG TRAVEL LIFE

PHONE: 516.328.3300 • FAX: 516.326.8827 • WWW.SDP-SI.COM



> MATERIAL:

Sleeve & Balls - AISI 52100 Steel
Retainer - Duracon M90

> SPECIFICATIONS:

d Tolerance:

3, 4, 5, 8, 10 & 12 mm +0.008/0
16 & 20 mm +0.009/-0.001
25 & 30 mm +0.011/-0.001
40, 50, & 60 mm +0.013/-0.002

D Tolerance:

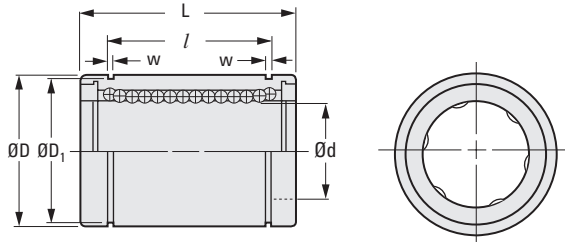
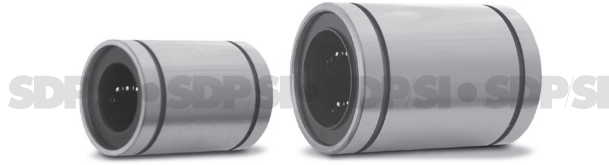
7, 8, 12 & 16 mm 0/-0.008
19, 22 & 26 mm 0/-0.009
32, 40 & 47 mm 0/-0.011
62 & 75 mm 0/-0.013
90 mm 0/-0.015

L Tolerance:

10 & 12 mm 0/-0.120
22, 25, 29, 32, 36 & 45 mm 0/-0.200
58, 68, 80 & 100 mm 0/-0.300
125 mm 0/-0.400

l Tolerance:

14.5, 16.5, 22, 22.9, 24.9 & 31.5 mm 0/-0.200
44.1, 52.1, 60.6 & 77.6 mm 0/-0.300
101.7 mm 0/-0.400



METRIC COMPONENT

Catalog Number *	Ball Circuit	d Bore	D Dia.	L Length	l Groove Dist.	w Groove Width	D ₁ Groove Dia.	Load Capacity				
								Dynamic N	Static N			
** S99LBCM003010 <input type="checkbox"/>	4	3	7	10	—	—	—	69	105			
** S99LBCM004012 <input type="checkbox"/>		4	8	12				88	127			
S99LBCM005022 <input type="checkbox"/>	4	5	12	22	14.5	1.1	11.5	206	265			
S99LBCM008025 <input type="checkbox"/>		8	16	25				16.5	265	402		
S99LBCM010029 <input type="checkbox"/>		10	19	29				22	18	372	549	
S99LBCM012032 <input type="checkbox"/>	4	12	22	32	22.9	1.3	21	510	784			
S99LBCM016036 <input type="checkbox"/>		16	26	36				24.9	578	892		
S99LBCM020045 <input type="checkbox"/>	5	20	32	45	31.5	1.6	30.3	862	1370			
S99LBCM025058 <input type="checkbox"/>	6	25	40	58	44.1	1.85	37.5	980	1570			
S99LBCM030068 <input type="checkbox"/>		30	47	68				52.1	44.5	1570	2740	
S99LBCM040080 <input type="checkbox"/>	6	40	62	80	60.6	2.15	59	2160	4020			
S99LBCM050100 <input type="checkbox"/>		50	75	100				77.6	2.65	72	3820	7940
S99LBCM060125 <input type="checkbox"/>		60	90	125				101.7	3.15	86.5	4700	9800

* To order bearings with no seals, use catalog numbers as they are.

To order bearings with seals at both ends, add "S" to the end of catalog number.

** These part numbers are not available with seals.

5-17
D820

REV:
2/23/23