

# ONE- AND TWO-PIECE CLAMP-TYPE COLLARS

**SDP/SI**

EASY INSTALLATION  
WON'T MAR SHAFT

PHONE: 516.328.3300 • FAX: 516.326.8827 • WWW.SDP-SI.COM

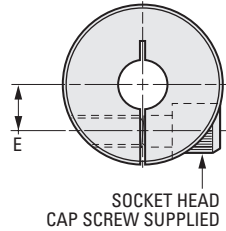
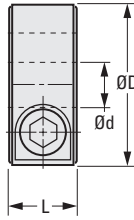
**> MATERIAL:**

304 Stainless Steel

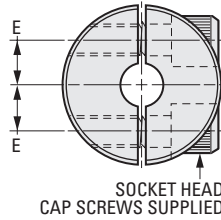
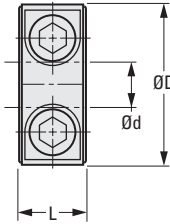
**> SPECIFICATION:**

Shaft Tolerance:

- 3 mm 0/-0.007
- 4 to 6 mm 0/-0.012
- 8 & 10 mm 0/-0.015
- 12 to 18 mm 0/-0.018
- 20 & 25 mm 0/-0.021



**Fig. 1**  
**One-Piece Clamp**



**Fig. 2**  
**Two-Piece Clamp**

The projections shown are per ISO convention.

**METRIC COMPONENT**

Catalog Number		Shaft Size h7	d Bore	D Dia. ± 0.1	L ± 0.1	E	Set Screw	Weight g	
Fig. 1 One-Piece Clamp	Fig. 2 Two-Piece Clamp							Fig. 1	Fig. 2
S25NSCM1S0308	S25NSCM2S0308	3	3	15	8	4.5	M3	9	9
S25NSCM1S0408	S25NSCM2S0408	4	4	15	8	4.5	M3	9	9
S25NSCM1S0508	S25NSCM2S0508	5	5	20	8	5.5	M3	16	16
S25NSCM1S0608	S25NSCM2S0608	6	6	20	8	6	M3	16	16
S25NSCM1S0808	S25NSCM2S0808	8	8	25	8	8	M3	24	24
S25NSCM1S1010	S25NSCM2S1010	10	10	30	10	9	M4	44	42
S25NSCM1S1210	S25NSCM2S1210	12	12	30	10	10	M4	42	40
S25NSCM1S1310	S25NSCM2S1310	13	13	30	10	10	M4	40	38
S25NSCM1S1512	S25NSCM2S1512	15	15	35	12	12	M5	68	66
S25NSCM1S1612	S25NSCM2S1612	16	16	35	12	12	M5	66	64
S25NSCM1S1715	S25NSCM2S1715	17	17	40	15	13	M6	108	102
S25NSCM1S1815	S25NSCM2S1815	18	18	45	15	15	M6	140	132
S25NSCM1S2015	S25NSCM2S2015	20	20	45	15	15	M6	144	129
S25NSCM1S2515	S25NSCM2S2515	25	25	50	15	18	M6	164	155

