

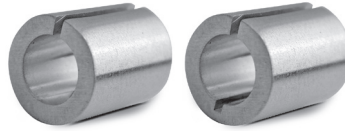
> MATERIAL:

Aluminum



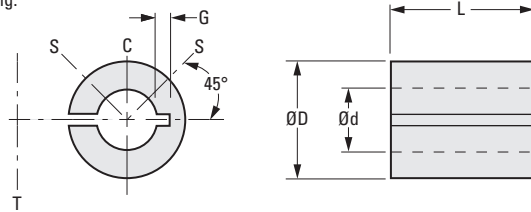
> INSTALLATION RECOMMENDATIONS:

- S = set screw positions in hub
- C = for single set screw fastening
- T = for tangential screw in clamp hub



> SPECIFICATIONS:

Bore reducers with thicker walls may have slot extending into opposite wall for additional flexibility.
D and d tolerances are maintained before slitting.



The projections shown are per ISO convention.

METRIC COMPONENT

Catalog Number	D Dia. +0.013 -0.025	d Bore +0.025 0	G Groove Depth	L	Catalog Number	D Dia. +0.013 -0.025	d Bore +0.025 0	G Groove Depth	L									
A 7A30M060309	6	3	0.64 (.025)	9 (.354)	A 7A30M100816	10	8	—	16 (.625)									
A 7A30M060312				12 (.472)	A 7A30M100822				22 (.865)									
A 7A30M060409		4	9 (.354)	12 (.472)	A 7A30M120622				12	6	1.27 (.050)	22 (.865)						
A 7A30M060412				12 (.472)	A 7A30M120635							35 (1.377)						
A 7A30M060509				5	12 (.472)							9 (.354)	A 7A30M120822	8	0.89 (.035)	22 (.865)		
A 7A30M060512												12 (.472)	A 7A30M120835			35 (1.377)		
A 7A30M080412	8	4	—	12 (.472)	A 7A30M121022	14	10	0.89 (.035)	22 (.865)									
A 7A30M080416				16 (.625)	A 7A30M121035				35 (1.377)									
A 7A30M080512		5		12 (.472)	12 (.472)				A 7A30M141022	12	—	22 (.865)	22 (.865)					
A 7A30M080516					16 (.625)				A 7A30M141035				35 (1.377)					
A 7A30M080612					6				12 (.472)				12 (.472)	A 7A30M141222	14	—	22 (.865)	22 (.865)
A 7A30M080616													16 (.625)	A 7A30M141235				35 (1.377)
A 7A30M100512	10	5	—	12 (.472)	A 7A30M161022	16	10	1.27 (.050)	22 (.865)									
A 7A30M100516				16 (.625)	A 7A30M161035				35 (1.377)									
A 7A30M100522		22 (.865)		12 (.472)	A 7A30M161222				12	0.89 (.035)	22 (.865)	35 (1.377)						
A 7A30M100612					16 (.625)								A 7A30M161235	35 (1.377)				
A 7A30M100616		6		16 (.625)	22 (.865)				A 7A30M161422	14	—	22 (.865)						
A 7A30M100622					22 (.865)				A 7A30M161435				35 (1.377)					
A 7A30M100812		8		12 (.472)														

NOTE: Dimensions in () are inch.

