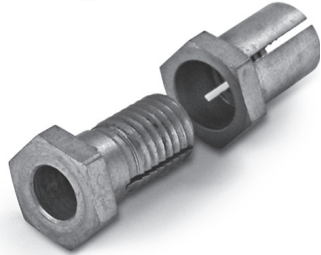
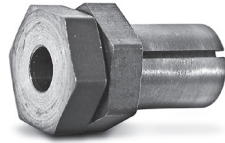


NEW SIZES ADDED
 PATENTED
 EASY ASSEMBLY
 NO MARRING OF SHAFTS

PHONE: 516.328.3300 • FAX: 516.326.8827 • WWW.SDP-SI.COM



> MATERIAL:

416 Stainless Steel

> SPECIFICATIONS:

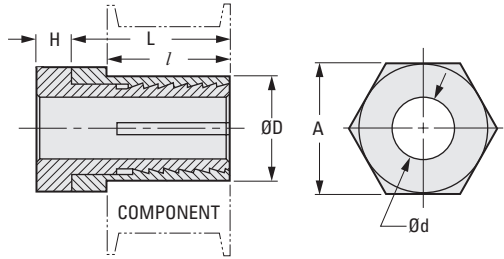
For Shaftloc® introduction and use, see page 3-13.

For optimum performance, the clearances between the shaft, Shaftloc® and housing should not exceed 0.0254 mm.

Maximum torque capacity based on mating components being degreased before assembly with Shaftloc® coupling.

Single-Ended Shaftloc® Sleeves

Can be used with Precision Ground Shafting, Catalog Number A 7X 1M...



The projections shown are per ISO convention.

METRIC COMPONENT

Catalog Number	d Bore +0.025 0	D Dia. 0 -0.025	A Hex Size	L	l	H	Max. Torque Capacity N • m
A 7Z39M0306	3	6	8	13.2	10	3.17	1.1
A 7Z39M0408	4	8	10	15.2	12	3.17	2.8
A 7Z39M0610	6	10	13	15.6	12	3.6	3.3
A 7Z39M0812	8	12	15	20	16	4	9.9
A 7Z39M1016	10	16	19	20	16	4	11
A 7Z39M1218	12	18	21	25.5	20	5.6	16.5
A 7Z39M1420	14	21	27	28.3	20	8.25	18.6
A 7Z39M1622	16	24	30	33.2	25	8.25	20.6
A 7Z39M1825	18	27	32	43.0	25	9.02	22.8



> DID YOU KNOW?

That you can see a video showing how the Shaftloc® rotating component fastener works and how it can benefit your application. It is located at: www.sdp-si.com/shaftloc.