

# T TIMING BELT CLAMP KITS • 5 & 10 mm PITCH



USED IN LINEAR DRIVES

PHONE: 516.328.3300 • FAX: 516.326.8827 • WWW.SDP-SI.COM

➤ **MATERIAL:**

Aluminum

➤ **SPECIFICATIONS:**

**Timing Belt Clamp Kit includes:**

Top and Bottom Plate and Hardware for Assembly

**Hardware for kit includes:**

Screws, Washers and Hex Nuts for Assembly

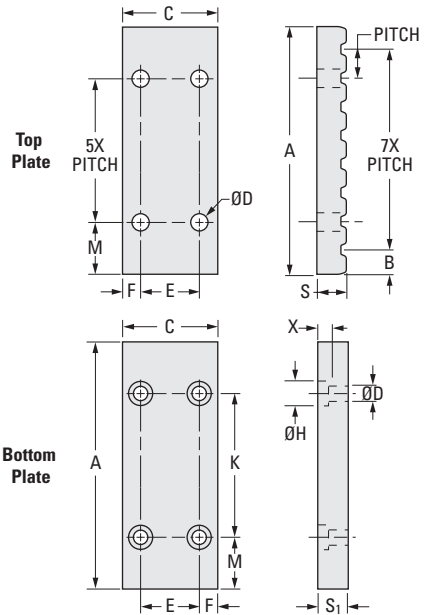
**For Replacement hardware kit, order:**

**A16A35MBOLTKIT** T 5 mm pitch

**A16A39MBOLTKIT** T 10 mm pitch



5 mm Pitch						
F mm (in.)	M mm (in.)	S mm (in.)	H mm (in.)	K mm (in.)	X mm (in.)	S <sub>1</sub> mm (in.)
7.5 (.295)	9 (.354)	8 (.315)	10 (.394)	25 (.984)	5 (.197)	10 (.394)
10 mm Pitch						
10 (.394)	18.5 (.728)	15 (.591)	15 (.591)	50 (1.969)	8 (.315)	16 (.630)



**METRIC COMPONENT**

Catalog Number	Belt Width mm (in.)	A mm (in.)	B mm (in.)	C mm (in.)	D mm (in.)	E mm (in.)	Toothed + Flat Plate Total Weight (with hardware) kg (lb.)
<b>T • 5 mm Pitch - Sold as Kit</b>							
A16A35M06	6 (.236)	43 (1.693)	4 (.157)	27.5 (1.083)	5.5 (.217)	12.5 (.492)	0.050 (.11)
A16A35M10	10 (.3937)	43 (1.693)	4 (.157)	31.5 (1.240)	5.5 (.217)	16.5 (.650)	0.070 (.15)
A16A35M16	16 (.630)	43 (1.693)	4 (.157)	37.5 (1.476)	5.5 (.217)	22.5 (.886)	0.070 (.15)
A16A35M25	25 (.984)	43 (1.693)	4 (.157)	46.5 (1.831)	5.5 (.217)	31.5 (1.240)	0.090 (.2)
<b>T • 10 mm Pitch - Sold as Kit</b>							
A16A39M16	16 (.630)	87 (3.425)	8.5 (.335)	46 (1.811)	9 (.354)	26 (1.024)	0.313 (.69)
A16A39M25	25 (.984)	87 (3.425)	8.5 (.335)	55 (2.165)	9 (.354)	35 (1.378)	0.372 (.82)
A16A39M32	32 (1.260)	87 (3.425)	8.5 (.335)	62 (2.441)	9 (.354)	42 (1.654)	0.431 (.95)