

# GT®2 TIMING BELT CLAMP KITS • 2 & 3 mm PITCH



USED IN LINEAR DRIVES

PHONE: 516.328.3300 • FAX: 516.326.8827 • WWW.SDP-SI.COM

**> MATERIAL:**

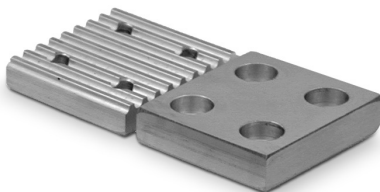
Aluminum

**> SPECIFICATIONS:**

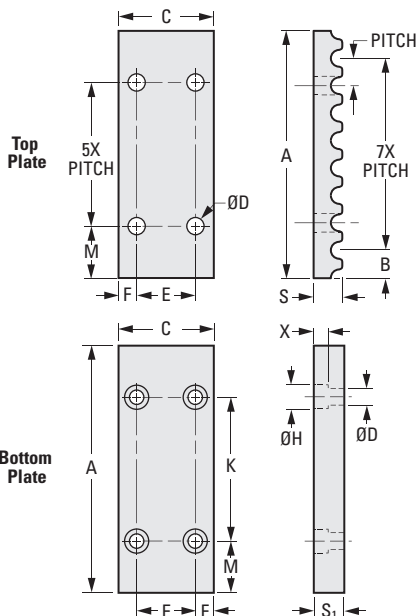
Timing belt clamp kit includes:  
Top and bottom plate and hardware for assembly.

Hardware for kit includes:  
Screws, washers and hex nuts for assembly.

For replacement hardware kit, order:  
**A16A51MBOLTKIT** GT®2 2 mm pitch  
**A16A53MBOLTKIT** GT®2 3 mm pitch



2 mm Pitch						
F mm (in.)	M mm (in.)	S mm (in.)	H Dia. mm (in.)	K mm (in.)	X mm (in.)	S <sub>1</sub> mm (in.)
4.7 (.185)	4 (.157)	4 (.157)	4.4 (.173)	10 (.394)	2 (.079)	4 (.157)
3 mm Pitch						
5.8 (.228)	6 (.236)	5 (.197)	6.5 (.256)	15 (.591)	3 (.118)	6 (.236)



**METRIC COMPONENT**

Catalog Number	Belt Width mm (in.)	A mm (in.)	B mm (in.)	C mm (in.)	D Dia. mm (in.)	E mm (in.)	Toothed + Flat Plate Total Weight (with hardware) kg (lb.)
<b>GT®2 • 2 mm Pitch - Sold as Kit</b>							
A16A51M04	4 (.157)	18 (.709)	2 (.079)	16.8 (.661)	2.4 (.094)	7.4 (.291)	0.006 (.01)
A16A51M06	6 (.236)	18 (.709)	2 (.079)	18.8 (.740)	2.4 (.094)	9.4 (.370)	0.015 (.03)
A16A51M09	9 (.354)	18 (.709)	2 (.079)	21.8 (.858)	2.4 (.094)	12.4 (.488)	0.017 (.04)
<b>GT®2 • 3 mm Pitch - Sold as Kit</b>							
A16A53M06	6 (.236)	27 (1.063)	3 (.118)	22 (.866)	3.4 (.134)	10.4 (.409)	0.016 (.04)
A16A53M09	9 (.354)	27 (1.063)	3 (.118)	25 (.984)	3.4 (.134)	13.4 (.528)	0.019 (.04)

