

ISO CLASS 6
 35° SPIRAL ANGLE
 MODULE 2, 2.5, 3, 3.5, 4 & 5
 20° PRESSURE ANGLE

PHONE: 516.328.3300 • FAX: 516.326.8827 • WWW.SDP-SI.COM

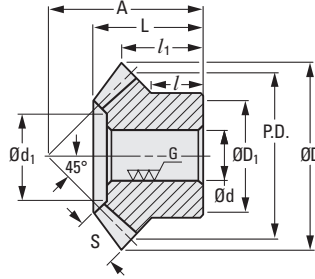


> MATERIAL:

AISI 1045 Steel, Tooth Surfaces
 Induction Hardened to HRC 48...53

> FINISH:

Black Oxide, except Ground Bore
 and Tooth Surfaces



METRIC COMPONENT

Catalog Number*	Mod.	d Bore H7	P.D.	D Dia.	S Face Width	L Length	D ₁ Hub Dia.	I Hub Proj.	A Mtg. Dist.	d ₁	I ₁ Crown to Back
No. of Teeth 20											
S13S1YMK20G20L12	2	12	40	42.4	10	24.75	34	14	37	21.72	18.2
S13S1YMK20G20R12											
S13S1YMK25G20L14	2.5	14	50	52.94	12	32.42	42	19	48	28.06	24.47
S13S1YMK25G20R14											
S13S1YMK30G20L16	3	16	60	63.72	15	39.6	50	23	58	31.57	29.86
S13S1YMK30G20R16											
S13S1YMK35G20L20	3.5	20	70	74.47	18	43.81	60	25	65	39.09	32.23
S13S1YMK35G20R20											
S13S1YMK40G20L20	4	20	80	84.88	20	50.51	64	27	75	43.43	37.44
S13S1YMK40G20R20											
S13S1YMK50G20L25	5	25	100	105.9	26	60.16	80	30	90	54.46	42.95
S13S1YMK50G20R25											
No. of Teeth 25											
S13S1YMK20G25L12	2	12	50	52.4	12	24.19	40	10	40	26.06	16.2
S13S1YMK20G25R12											
S13S1YMK25G25L16	2.5	16	62.5	65.54	15	30.24	50	12.5	50	34.57	20.27
S13S1YMK25G25R16											
S13S1YMK30G25L20	3	20	75	78.77	20	37.57	60	15	60	37.43	24.39
S13S1YMK30G25R20											
S13S1YMK35G25L25	3.5	25	87.5	91.81	22	42.98	70	17.5	70	46.77	28.41
S13S1YMK35G25R25											
S13S1YMK40G25L28	4	28	100	104.7	25	49.14	80	20	80	55.29	32.55
S13S1YMK40G25R28											
S13S1YMK50G25L28	5	28	125	130.86	30	60.59	100	25	100	65.15	40.43
S13S1YMK50G25R28											
No. of Teeth 30											
S13S1YMK20G30L12	2	12	60	62.42	12	29.27	45	12.5	50	36.06	21.21
S13S1YMK20G30R12											
S13S1YMK25G30L16	2.5	16	75	78.04	15	36.08	60	17	62	47.57	26.02
S13S1YMK25G30R16											
S13S1YMK30G30L20	3	20	90	93.61	20	45.25	70	20	75	53.43	31.8
S13S1YMK30G30R20											
S13S1YMK35G30L25	3.5	25	105	109.21	22	49.4	90	25	85	67.77	34.6
S13S1YMK35G30R25											
S13S1YMK40G30L28	4	28	120	124.71	25	54.28	100	25	95	79.29	37.35
S13S1YMK40G30R28											

NOTE: R or L in catalog number indicates right- or left-hand direction of helix.

* A set of spiral miter gears must be identical in module and number of teeth, but opposite in spiral hands.

©Copyright 2019 Stock Drive Products / Sterling Instrument, a Designatronics company. All rights reserved.

1-144
 D820

REVISED:
 6/5/23

