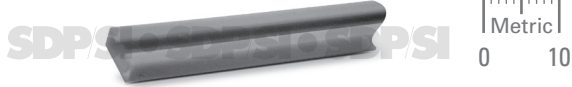


GUIDE RAILS

PHONE: 516.328.3300 • FAX: 516.326.8827 • WWW.SDP-SI.COM

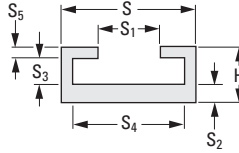
> MATERIAL:

Extruded Aluminum



> SPECIFICATIONS:

Stock Length – 1000 mm (39.37")
 Longer lengths in nylon are available on special request.



METRIC COMPONENT

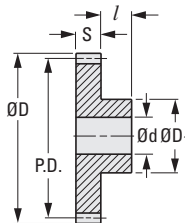
Catalog Number	For Rack Module	S	S ₁	H	S ₂	S ₃	S ₄	S ₅
A 1A12MHR081000	0.8	10.3 (.406)	4.5 (1.80)	4.8 (.19)	1.8 (.070)	1.8 (.071)	8.4 (.331)	1 (.039) Ref.
A 1A12MHR101000	1	12.3 (.484)	5.7 (.22)	5.2 (.20)	1.8 (.070)	2.4 (.094)	10.4 (.409)	
A 1A12MHR151000	1.5	14.3 (.563)	7.2 (.28)	5.4 (.21)	1.8 (.070)	2.7 (.106)	12.4 (.488)	
A 1A12MHR201000	2	17.3 (.681)	8.9 (.35)	6.1 (.24)	2.3 (.091)	2.9 (.114)	15.4 (.606)	

NOTE: Dimensions in () are inch.

PINIONS – MODULE 0.8 TO 2

> MATERIAL:

Acetal



METRIC COMPONENT

Catalog Number	Module	No. of Teeth	P.D.	D Dia.	d Bore	S Face Width	D ₁ Hub Dia.	l Hub Proj.
A 1M 2MYHF08032	0.8	32	25.6	27.2	6	4	12	5
A 1M 2MYHF10032	1	32	32	34	6	5	14	6
A 1M 2MYHF15024	1.5	24	36	39	8	6	18.3	11
A 1M 2MYHF20024	2	24	48	52	10	8	24	12