

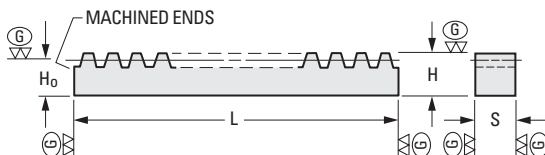
ISO CLASS 5
GROUND TEETH
20° PRESSURE ANGLE

► MATERIAL:

AISI 1045 Steel
Hardened to HRC 27... 32

► SPECIFICATIONS:

Tolerance h8: 8 & 10 mm 0/-0.022
12 & 15 mm 0/-0.027
20 mm 0/-0.033



- 1
- 2
- 3
- 4
- 5
- 6
- 7
- 8
- 9
- 10
- 11
- 12
- 13
- 14
- 15
- 16

METRIC COMPONENT

Catalog Number	Module	No. of Usable Teeth	S Face Width h8	H Height h8	H ₀ Pitch Distance	L Stock Length mm
S18C05M128P0812G	0.5	128	8	12	11.5	201.06
S18C08M080P0812G	0.8	80	8	12	11.2	201.06
S18C10M096P1015G	1	96	10	15	14	301.59
S18C15M064P1520G	1.5	64	15	20	18.5	301.59

See index for ground spur gears.

JOINING GAUGES for GROUND RACKS – MODULE 0.5, 0.8, 1, & 1.5

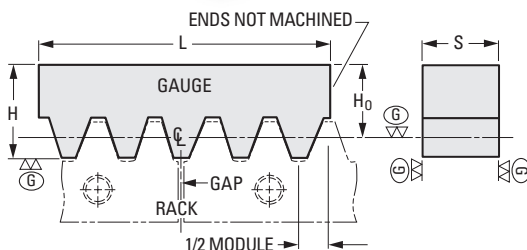
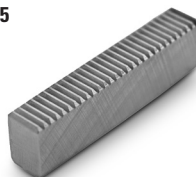
ISO CLASS 5
GROUND TEETH
20° PRESSURE ANGLE

► MATERIAL:

AISI 1045 Steel
Hardened to HRC 27... 32

► SPECIFICATIONS:

Tolerance h8: 8 & 10 mm 0/-0.022
12 & 15 mm 0/-0.027
20 mm 0/-0.033



METRIC COMPONENT

Catalog Number	Mod.	1/2 Module		No. of Teeth	S Face Width h8	H Height h8	H ₀ Pitch Distance	L Stock Length approx.
		Dim.	Tol.					
S18C05MGAGE-G	0.5	0.785	-0.02 / -0.08	29	8	12	11.5	45.3
S18C08MGAGE-G	0.8	1.256	-0.03 / -0.12	18	8	12	11.2	44.9
S18C10MGAGE-G	1	1.57	-0.03 / -0.12	14	10	15	14	43.6
S18C15MGAGE-G	1.5	2.356	-0.04 / -0.16	9	15	20	18.5	41.9

See index for ground spur gears.