

# CLIP BEARINGS WITH DOUBLE FLANGE

# SDP/SI

FOR USE WITH SHEET METAL PLATES

PHONE: 516.328.3300 • FAX: 516.326.8827 • WWW.SDP-SI.COM



**> MATERIAL:**

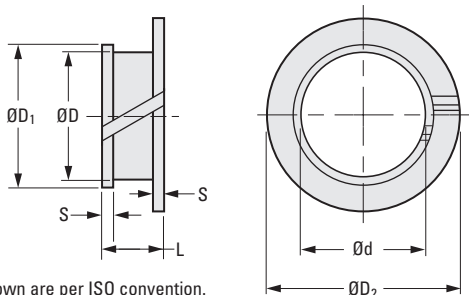
M250® Polymer

**> FEATURES:**

- Easy Installation.
- Maintenance-Free & Self-Lubricating.
- Smooth Operation.
- Good Wear Resistance.
- Used for Both Rotational & Linear Movements.
- Lightweight.

**> OPERATING TEMPERATURE:**

- Continuous: -40°C to +80°C
- Intermittent: +170°C



The projections shown are per ISO convention.

**METRIC COMPONENT**

Catalog Number	d Bore	D Dia.	Flange Dia.		S Flange Width 0 -0.1	L Length +0.2 0	Recommended				
			D <sub>1</sub> Dia.	D <sub>2</sub> Dia.			Housing Bore		Shaft Size		Sheet Metal Thickness
							Max.	Min.	Max.	Min.	
S99GMCM0304832	3	4.2	4.8	6	0.6	3.2	4.380	4.200	3.000	2.975	1.45 - 1.92
S99GMCM0304842						4.2					2.45 - 2.92
S99GMCM0405932	4	5.2	5.9	7		3.2	5.380	5.200	4.000	3.975	1.45 - 1.92
S99GMCM0405942						4.2					2.45 - 2.92
S99GMCM0506832	5	6.2	6.8	8		3.2	6.420	6.200	5.000	4.975	1.45 - 1.92
S99GMCM0506842						4.2					2.45 - 2.92
S99GMCM0607832	6	7.2	7.8	11		3.2	7.420	7.200	6.000	5.975	1.45 - 1.92
S99GMCM0607842						4.2					2.45 - 2.92
S99GMCM0607852	7	9	9.8	13		5.2	9.220	9.600	7.000	6.975	3.45 - 3.92
S99GMCM0709846						4.6					2.45 - 2.92
S99GMCM0810436	8	9.6	10.4	13	3.6	9.820	8.000	7.975	7.975	1.45 - 1.92	
S99GMCM0810446					4.6					2.45 - 2.92	
S99GMCM0911436	9	10.6	11.4	14	3.6	10.870	10.600	9.000	8.975	1.45 - 1.92	
S99GMCM1012436					4.6					2.45 - 2.92	
S99GMCM1012446	10	11.6	12.4	15	4.6	11.870	11.600	10.000	9.975	2.45 - 2.92	
S99GMCM1214436					3.6					1.45 - 1.92	
S99GMCM1214446	12	13.6	14.4	17	4.6	13.870	13.600	12.000	11.975	2.45 - 2.92	
S99GMCM1214456					5.6					3.45 - 3.92	
S99GMCM1416446	14	15.6	16.4	19	4.6	15.870	15.600	14.000	13.975	2.45 - 2.92	
S99GMCM1618436					3.6					1.45 - 1.92	
S99GMCM1618446	16	17.6	18.4	21	4.6	17.870	17.600	16.000	15.975	2.45 - 2.92	
S99GMCM1821050					20.330					20.000	18.000
S99GMCM2023050	22.330	22.000	20.000	19.975							
S99GMCM2528050	27.330	27.000	25.000	24.975							

