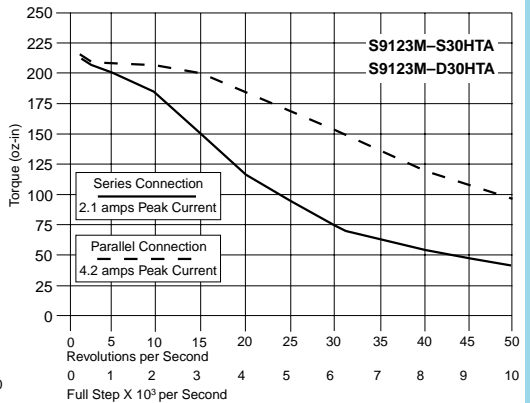
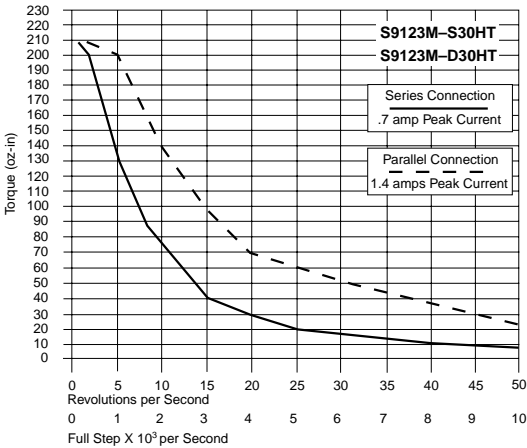
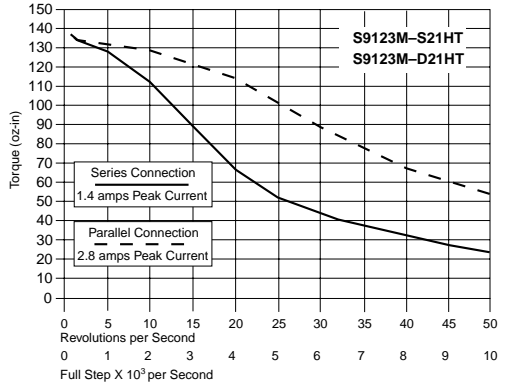
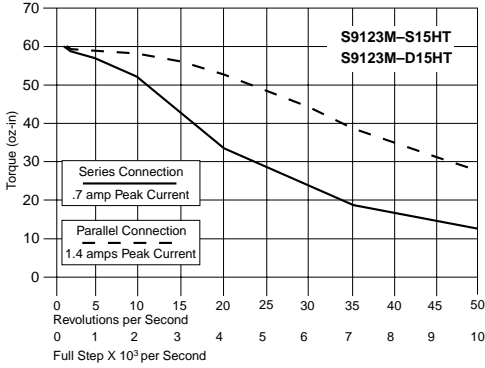
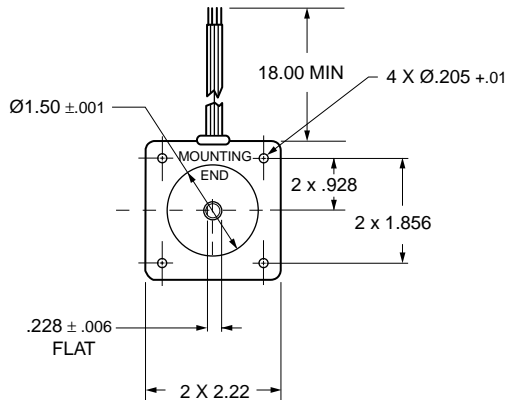
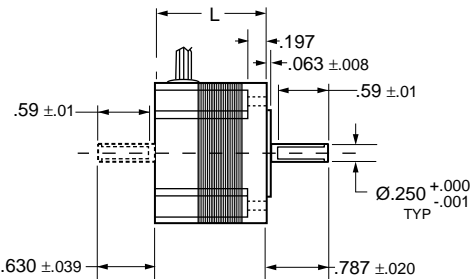
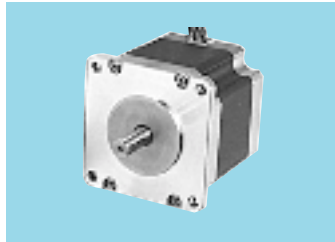


**MAXIMUM THEORETICAL TORQUE CURVES
DRIVE SETTING 80V DC**



■ 1.8° STEP ANGLE

■ SINGLE- OR DOUBLE-ENDED SHAFTS



SPECIFICATIONS:

Maximum Drive Voltage – 80V DC

Leads – 8 (See wiring diagram page)

Optimized for microstepping

Catalog Number*	Motor Conn.	L	Min. Holding Torque oz. in.	Phase Current amps	Phase Inductance mH ±20%	Phase Resistance ohms ±10%	Voltage V DC	Rotor Inertia oz. in. ²	Weight lbs.
S9123M-D15HT S9123M-S15HT	Series	1.54	76.6	.71	21.6	10.4	7.4	.66	1.0
	Parallel		76.6	1.41	5.4	2.6	3.7		
	Unipolar		54.2	1.00	5.4	5.2	5.2		
S9123M-D21HT S9123M-S21HT	Series	2.13	177.0	1.41	10.0	3.6	5.1	1.64	1.54
	Parallel		177.0	2.83	2.5	.9	2.5		
	Unipolar		125.0	2.00	2.5	1.8	3.6		
S9123M-D30HT S9123M-S30HT	Series	2.99	264.0	.71	56.0	16.4	11.6	2.62	2.20
	Parallel		264.0	1.41	14.0	4.1	5.8		
	Unipolar		187.0	1.00	14.0	8.2	8.2		
S9123M-D30HTA S9123M-S30HTA	Series	2.99	264.0	2.12	6.4	2.0	4.2	2.62	2.20
	Parallel		264.0	4.24	1.6	.5	2.1		
	Unipolar		187.0	3.00	1.6	1.0	3.0		

* Catalog numbers with **D** in the suffix have **double shafts**; **S** in the suffix denotes **single shaft**.