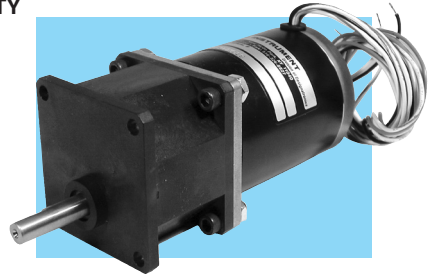
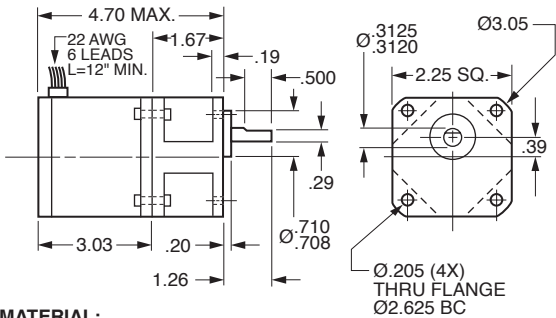




# Offset Stepper Gearmotors – NEMA Size 23

Stock Drive Products/Sterling Instrument ■ Phone: 516-328-3300 ■ Fax: 516-326-8827

- 1.8° NOMINAL MOTOR STEP ANGLE
- 5:1, 10:1, 18:1 GEAR RATIOS
- LIGHT-DUTY



**MATERIAL:**

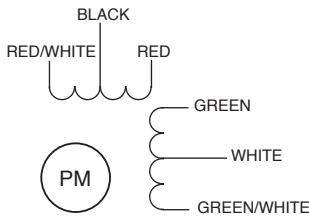
- Gearhead Housing** – Ryton® (Engineering Resin), Black
- Mounting Flanges** – Ryton® (Engineering Resin), Black
- Output Shaft** – Stainless Steel
- Gears** – Stainless Steel
- Bearings** – Composite Bushings

**SPECIFICATIONS:**

- Max. Input Speed:** 1000 rpm
- Shaft Loading:** Radial – 15 lb.  
Axial – 15 lb.
- Shaft Play Max.:** Radial – .002  
Axial – .010
- Gearhead Max. Cont. Torque:** 320 oz. in.
- Phase Resistance:** .37 ohms ± 10% @ 25°C
- Winding Inductance:** .6 mH ± 20%
- Rated Current:** 4.70 Amp. / Phase
- Minimum Efficiency:** 80%
- Maximum Backlash:** 45 arc min.
- Operating Temperature:** -40°F to +255°F
- Weight:** 45 oz.

Catalog Number	Gear Ratio	Step Angle per step	Torque Rating oz. in.		Maximum Inertia oz. in. sec. <sup>2</sup>
			Cont.	Holding	
S9123C-S18GM005	5:1	1.8°	see curve	500	1.471 x 10 <sup>-5</sup>
S9123C-S18GM010	10:1			1000	9.57 x 10 <sup>-6</sup>
S9123C-S18GM018	18:1			1800	1.986 x 10 <sup>-5</sup>

**SCHEMATIC**



**Bipolar Chopper Drive  
Switching Sequence for CW  
Rotation Facing Mounting End**

Step	Red	Black	Green	White
0	+	-	+	-
1	-	+	+	-
2	-	+	-	+
3	+	-	-	+
4	+	-	+	-

**NOTE:** Red/White and Green/White wires are not used. They must be electrically isolated.

**SPEED vs. TORQUE CHARACTERISTICS**

Drive Setting 35V DC – 3.3 Amps per phase

