

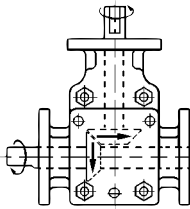


# Right Angle Drives

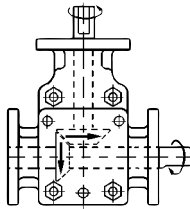
■ SIZE 13

■ LARGE

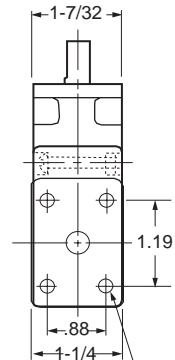
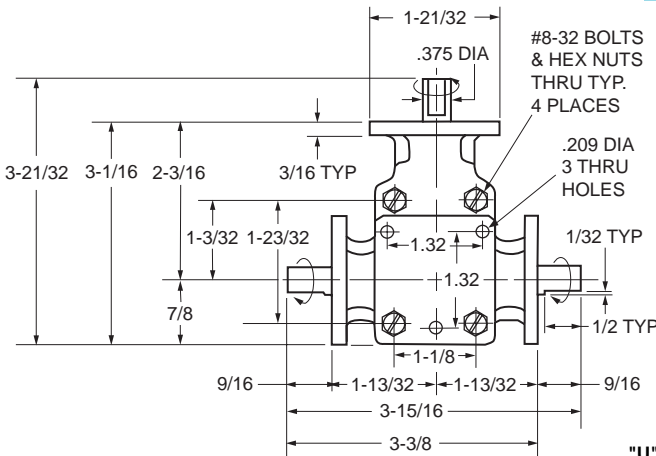
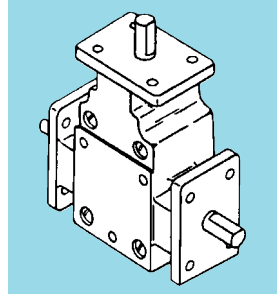
■ BALL BEARING



"L" SERIES



"R" SERIES



"U" SERIES

$.166 \text{ DIA}$   
12 HOLES THRU  
FLANGES ONLY

**MATERIAL:**

- Housing** – Fiberglass Reinforced Plastic
- Gears** – Steel, Hardened — Coniflex Type
- Shafts** – High-Tensile Steel
- Bearings** – Steel Ball
- Lubrication** – Permanently Lubricated with Lithium-Based Grease

Catalog Number	Shaft Dia. +.000 -.001	Gear Ratio	Approx. Weight oz.
A 2Z20-UC101012	.375	1:1	12
A 2Z20-LC101012			
A 2Z20-RC101012			

**NOTE:** Rated at 1/3 HP at 1800 rpm. Maximum speed is 3000 rpm.