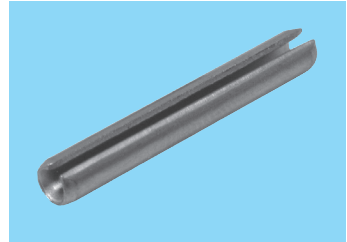
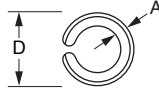
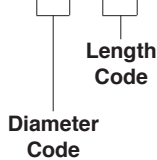


CHAMFER BOTH ENDS



### CATALOG NUMBER DESIGNATION:

A 9Y35-□□□□



Example:

A 9Y35-0632 is a Stainless Steel Roll Pin with a 3/16 Nominal Diameter, 1 in. Long.

\*Length Tolerance: .188 to 1.000 ± .015  
1.125 to 1.500 ± .020

**MATERIAL:** 420 Stainless Steel – Rc 43-52 Priced Per 100 Pieces

NOMINAL DIAMETER					Length Code	L* Length
1/16	3/32	1/8	5/32	3/16		
Dia. Code	Dia. Code	Dia. Code	Dia. Code	Dia. Code		
02	03	04 <sup>Δ</sup>	05	06	06	.188
					08	.250
					10	.312
					12	.375
					14	.437
					16	.500
					18	.562
					20	.625
					22	.687
					24	.750
	26	.812				
	28	.875				
	30	.937				
	32	1.000				
	36	1.125				
	40	1.250				
	44	1.375				
	48	1.500				

Shaded areas represent sizes not available.

<sup>Δ</sup>To be discontinued when present stock is depleted.

Nominal Diameter	A Wall Thickness	D Diameter		Recommended Hole Size	
		Min.	Max.	Min.	Max.
1/16	.012	.066	.069	.062	.065
3/32	.022	.099	.103	.094	.097
1/8	.028	.131	.135	.125	.129
5/32	.032	.162	.167	.156	.160
3/16	.042	.194	.199	.187	.192