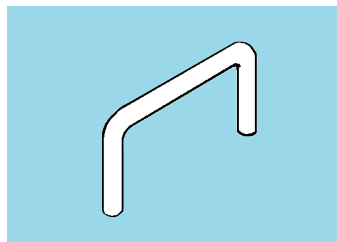
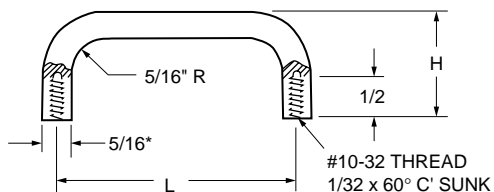
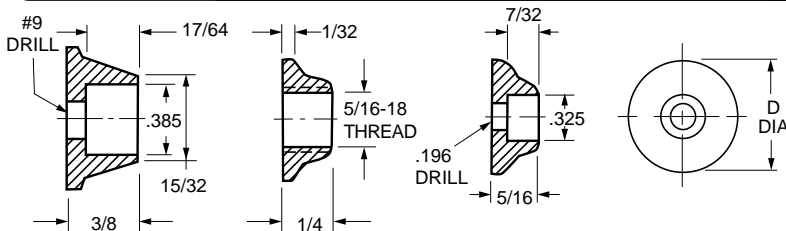


ROUND



Catalog Number	Material	Finish	H Height	L Length
A 9B44-A3010	Brass	Nickel Plated	1-5/16	3
A 9B44-A4210			1-1/2	4-1/4
A 9B44-A4510			4-1/2	4-9/16
A 9B44-A4610			6-1/2	6-1/2
A 9Y44-A30	Stainless Steel	Plain	1-5/16	3
A 9Y44-A30H			3	3
A 9Y44-A42			1-1/2	4-1/4
A 9Y44-A45			4-1/2	4-1/2
A 9Y44-A60			6	6
A 9Y44-A65	1-3/4	6-1/2	6-1/2	
A 9A44-A30	Aluminum	Black Anodized	1-1/2	3
* A 9A44-A40			1-7/8	4
A 9A44-A46			1-1/2	4-9/16

* A 9A44-A40 has rod dia. of 3/8 dia. & internal radius of 3/8".



Catalog Number	Fig. No.	Material	Finish	D Dia.
A 9A44-AAA	1	Aluminum	Black Anodized	3/4
A 9B44-AAA	1	Brass	Nickel Plated	3/4
A 9B44-ATH	2			5/8
A 9B44-A	3			3/4
A 9A44-A	3	Aluminum	Black Anodized	3/4
A 9Y44-A		Stainless Steel	Plain	