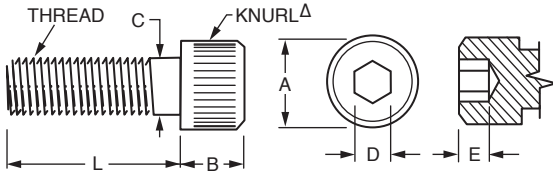


■ ALLOY STEEL

■ MOLY COATED



MATERIAL: Alloy Steel

FINISH: Black Oxide – Coated with Dry Molybdenum Disulfide

Priced Per 100 Pieces

Catalog Number	Thread Size	L Length	A Max.	B Max.	C Max.	D Nom.	E Min.
A 9Q26-M025608	#2-56	1/4	.140	.086	.086	5/64	.038
A 9Q26-M025612		3/8					
A 9Q26-M034812	#3-48	3/8	.161	.099	.099	5/64	.044
A 9Q26-M034816		1/2					
A 9Q26-M044008		1/4					
A 9Q26-M044012	#4-40	3/8	.183	.112	.112	3/32	.051
A 9Q26-M044016		1/2					
A 9Q26-M044024		3/4					
A 9Q26-M063208		1/4					
A 9Q26-M063216	#6-32	1/2	.226	.138	.138	7/64	.064
A 9Q26-M063220		5/8					
A 9Q26-M063224		3/4					
A 9Q26-M064008		1/4					
A 9Q26-M064016	#6-40	1/2	.226	.138	.138	7/64	.064
A 9Q26-M064020		5/8					
A 9Q26-M064024		3/4					
A 9Q26-M083216	#8-32	1/2	.270	.164	.164	9/64	.077
A 9Q26-M083224		3/4					
A 9Q26-M083232		1					
A 9Q26-M103216		1/2					
A 9Q26-M103224	#10-32	3/4	.312	.190	.190	5/32	.090
A 9Q26-M103232		1					
A 9Q26-M252016		1/2					
A 9Q26-M252024	1/4-20	3/4	.375	.250	.250	3/16	.120
A 9Q26-M252032		1					
A 9Q26-M252048		1-1/2					

ΔHead may be supplied with or without knurl at SDP option