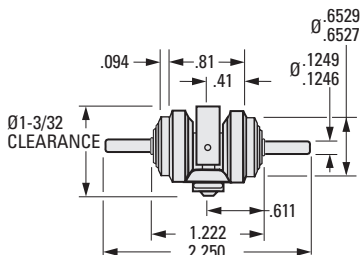


PATENT NO. 3,137,181

> MATERIAL:

- Stainless Steel
- Ball Bearings

Sterling Instrument standard catalog end gears which are ordered at the same time as the below differential will be assembled to the differential free of charge. Consult the differential end gear section of this catalog for available standard end gears. Zero backlash between end gears.



INCH COMPONENT

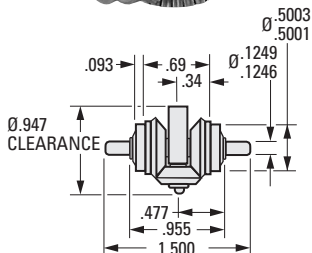
Catalog Number	Pitch	Max. Torque Rating ozf in.	Max. Operating Speed rpm	Breakaway Torque (One Tooth Load) ozf in.	Breakaway Torque (Three Tooth Load) ozf in.	Weight oz.
S9540A-TS9	72	50	1000	.15	.3	1.8

STANDARD DIFFERENTIAL - 64 PITCH

> MATERIAL:

- Stainless Steel
- Ball Bearings

Sterling Instrument standard catalog end gears which are ordered at the same time as the below differential will be assembled to the differential free of charge. Consult the differential end gear section of this catalog for available standard end gears. 10 arc minutes maximum backlash between end gears.



INCH COMPONENT

Catalog Number	Pitch	Max. Torque Rating ozf in.	Max. Operating Speed rpm	Breakaway Torque ozf in.	Weight oz.
S9540A-TS7	64	26	800	.08	.9