

ELECTRICALLY INSULATING

PHONE: 516.328.3300 • FAX: 516.326.8827 • WWW.SDP-SI.COM

> MATERIAL:

Body - Molded Acetal
Spider & Insert - Nickel Plated Brass

> MAX. OPERATING TEMPERATURE:

180°F

> SPECIFICATIONS:

Max. Angular Displacement: 45°

B Bore Tolerance:
 Fig. 1 Plain: +.000/-0.002
 Fig. 2 With Insert: +.001/-0.000

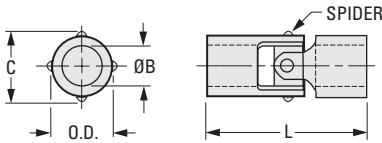
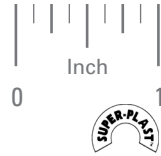


Fig. 1 Plain

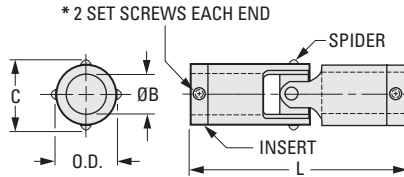


Fig. 2 With Insert

INCH COMPONENT

Catalog Number	O.D.	B Bore	Bore Depth (Typ)	L Overall Length	C	Set Screw	Max. Torque lbf in.	
Fig. 1 Plain								
A 5T 8-D204	1/4	1/8	.23	3/4	.27		5	
A 5T 8-D206		3/16						
A 5T 8-D306	3/8	1/4	.34	1-1/8	.41		16	
A 5T 8-D308		3/16						
A 5T 8-D406	1/2	1/4	.42	1-25/64	.54	—	26	
A 5T 8-D408		5/16						
A 5T 8-D410	5/8	1/4	.58	2-5/64	.68		60	
A 5T 8-D508		5/16						
A 5T 8-D512		3/8						
A 5T 8-D514		7/16						
Fig. 2 With Insert								
A 5Z 8-D204	1/4	*1/8	.39	1-3/64	.27	#4-40	5	
A 5Z 8-D304	3/8		.52		1-31/64		.41	16
A 5Z 8-D306	1/2	3/16	.63			.54	#6-32	26
A 5Z 8-D406		1/4						
A 5Z 8-D408	5/8	5/16	.86	2-41/64	.68	#8-32	60	
A 5Z 8-D508								3/8
A 5Z 8-D512								

* One set screw each end.



MOLDED UNIVERSAL JOINTS • DOUBLE JOINT



ELECTRICALLY INSULATING

PHONE: 516.328.3300 • FAX: 516.326.8827 • WWW.SDP-SI.COM

> MATERIAL:

Body - Molded Acetal
Spider & Insert - Nickel Plated Brass

> MAX. OPERATING TEMPERATURE:

180°F

> SPECIFICATIONS:

Max. Angular Displacement: 90°

B Bore Tolerance:

Fig. 1 Plain: +.000/-0.002

Fig. 2 With Insert: +.001/-0.000

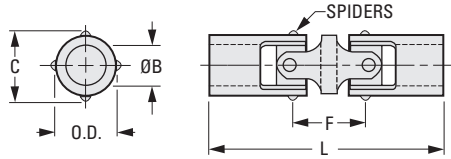
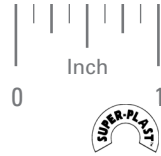


Fig. 1 Plain

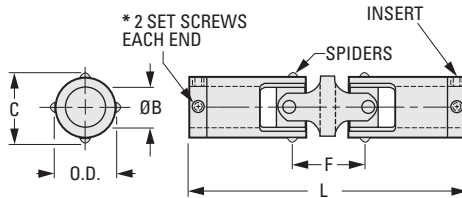


Fig. 2 With Insert

INCH COMPONENT

Catalog Number	O.D.	B Bore	Bore Depth (Typ)	L Overall Length	C	F	Set Screw	Max. Torque lbf in.	Max. Parallel Offset
Fig. 1 Plain									
A 5T 8-DD204	1/4	1/8	.23	1-1/16	.27	5/16	—	2.5	.22
A 5T 8-DD206		3/16							
A 5T 8-DD306	3/8	3/16	.34	1-41/64	.41	17/32	—	7.0	.36
A 5T 8-DD308		1/4							
A 5T 8-DD406	1/2	3/16	.42	2-1/64	.54	5/8	—	12.0	.43
A 5T 8-DD408		1/4							
A 5T 8-DD410		5/16							
A 5T 8-DD508	5/8	1/4	.58	2-61/64	.68	7/8	—	47.0	.61
A 5T 8-DD510		5/16							
A 5T 8-DD512		3/8							
A 5T 8-DD514		7/16							
Fig. 2 With Insert									
A 5Z 8-DD204	1/4	*1/8	.39	1-23/64	.27	5/16	#4-40	2.5	.22
A 5Z 8-DD304	3/8	*1/8	.52	2	.41	17/32	#4-40	7.0	.36
A 5Z 8-DD306		3/16							
A 5Z 8-DD406	1/2	3/16	.63	2-7/16	.54	5/8	#6-32	12.0	.43
A 5Z 8-DD408		1/4							
A 5Z 8-DD508	5/8	1/4	.86	3-33/64	.68	7/8	#8-32	47.0	.61
A 5Z 8-DD510		5/16							
A 5Z 8-DD512		3/8							

* One set screw each end.

7-14
D820

REVISED:
05/19/23

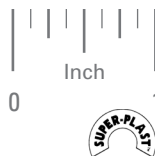
- I
- R
- T
- 1
- 2
- 3
- 4
- 5
- 6
- 7
- 8
- 9
- 10
- 11
- 12
- 13
- 14
- 15
- 16

MOLDED UNIVERSAL JOINTS

SDP/SI

WITH MOLDED SLIDE EXTENSION
PLAIN OR WITH INSERT
3/8 O.D.

PHONE: 516.328.3300 • FAX: 516.326.8827 • WWW.SDP-SI.COM



> MATERIAL:

Body - Molded Acetal
Spider & Insert - Nickel Plated Brass

> MAX. OPERATING TEMPERATURE:

180°F

> SPECIFICATIONS:

Max. Angular Displacement: 90°
ΔMax. Recommended Extension: 3/4

B Bore Tolerance:

Fig. 1 Plain: +.000/-0.002

Fig. 2 With Insert: +.001/-0.000

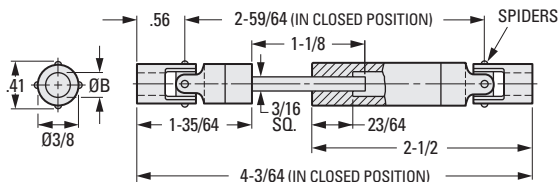
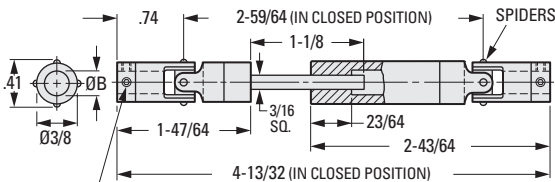


Fig. 1 Plain



* 2 SET SCREWS EACH END

Fig. 2 With Insert

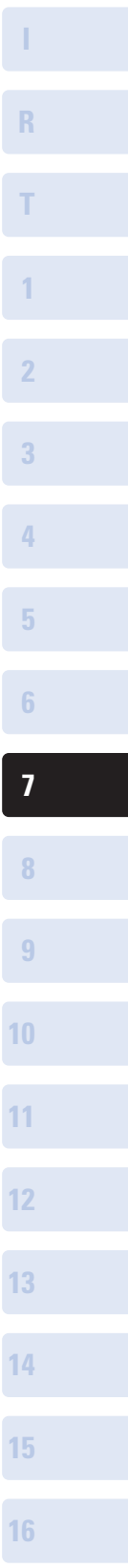
INCH COMPONENT

Catalog Number	B Bore	Bore Depth (Typ)	Set Screw	Max. Recommended Torque lbf in.	
				Closed	Open ^Δ
Fig. 1 Plain					
A 5T 8-SE306	3/16	.34	—	8	5
A 5T 8-SE308	1/4				
Fig. 2 With Insert					
A 5Z 8-SE304	*1/8	.52	#4-40	8	5
A 5Z 8-SE306	3/16				

* One set screw each end.

7-16
D820

REVISED:
05/19/23



MOLDED UNIVERSAL JOINTS



WITH MOLDED SLIDE EXTENSION
PLAIN OR WITH INSERT
1/2 O.D.

PHONE: 516.328.3300 • FAX: 516.326.8827 • WWW.SDP-SI.COM



> MATERIAL:

Body - Molded Acetal
Spider & Insert - Nickel Plated Brass

> MAX. OPERATING TEMPERATURE:

180°F

> SPECIFICATIONS:

Max. Angular Displacement: 90°

Δ Max. Recommended Extension: 3/4 in.

B Bore Tolerance:

Fig. 1 Plain: +.000/-.002

Fig. 2 With Insert: +.001/-.000

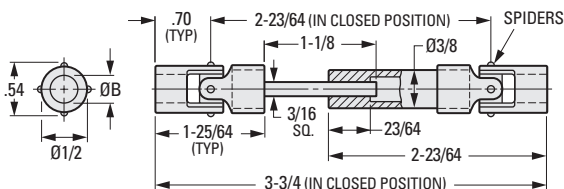


Fig. 1 Plain

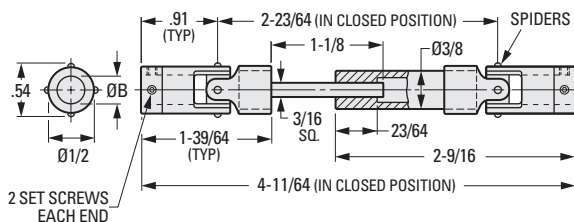


Fig. 2 With Insert

INCH COMPONENT

Catalog Number	B Bore	Bore Depth (Typ)	Set Screw	Max. Recommended Torque lbf in.	
				Closed	Open ^Δ
Fig. 1 Plain					
A 5T 8-SE406	3/16	.42	—	14	10
A 5T 8-SE408	1/4				
A 5T 8-SE410	5/16				
Fig. 2 With Insert					
A 5Z 8-SE406	3/16	.63	#6-32	14	10
A 5Z 8-SE408	1/4				

7-17
D820

REVISED:
05/19/23

1

R

T

1

2

3

4

5

6

7

8

9

10

11

12

13

14

15

16

MOLDED UNIVERSAL JOINTS • TELESCOPING



WITH BRASS SLIDE EXTENSION
ELECTRICALLY INSULATING

PHONE: 516.328.3300 • FAX: 516.326.8827 • WWW.SDP-SI.COM



> MATERIAL:

- Body - Molded Acetal
- Spider & Insert - Nickel Plated Brass
- Tube - Brass

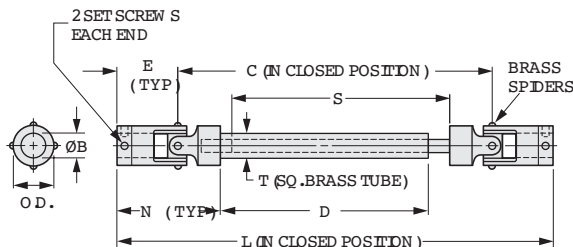
> MAX. OPERATING TEMPERATURE:

180°F

> SPECIFICATIONS:

- Max. Angular Displacement: 90°
- Max. Recommended Extension: D/2

Shorter or longer lengths available on special order.



1

R

T

1

2

3

4

5

6

7

8

9

10

11

12

13

14

15

16

INCH COMPONENT

Catalog Number	O.D.	B Bore +.001 -.000	Bore Depth (Typ)	E	F	N
A 5Z 8-SEB204	1/4	*1/8	.39	17/32	.27	29/32
A 5Z 8-SEB304	3/8		.52	3/4	.41	1-5/16
A 5Z 8-SEB306	1/2	3/16	.63	29/32	.54	1-39/64
A 5Z 8-SEB406		1/4				
A 5Z 8-SEB408		5/8	5/16	.86	1-21/64	.68
A 5Z 8-SEB510		3/8				
A 5Z 8-SEB512						

* One set screw each end.

Catalog Number (Ref.)	Length Closed		D	S	T Square	Set Screw
	L	C				
A 5Z 8-SEB204	3-1/4	2-3/16	1-7/16	1-19/32	1/8	#4-40
A 5Z 8-SEB304	4-7/16	2-15/16	1-13/16	2-3/32	5/32	
A 5Z 8-SEB306						
A 5Z 8-SEB406	6	4-3/16	2-25/32	3-3/32	3/16	#6-32
A 5Z 8-SEB408						
A 5Z 8-SEB510	8	5-11/32	3-1/4	3-25/32	1/4	#8-32
A 5Z 8-SEB512						

NOTE: Total open length = L (Closed) + D/2 (Max).