

SHAFT COUPLINGS



PRECISION SHAFT COUPLINGS

PHONE: 516.328.3300 • FAX: 516.326.8827 • WWW.SDP-SI.COM

> MATERIAL:

303 Stainless Steel

Stainless steel socket head set screws supplied.

B₁ & B concentric with .0005 T.I.R.

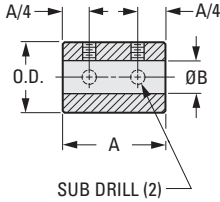
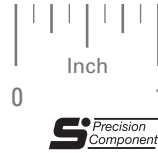


Fig. 1

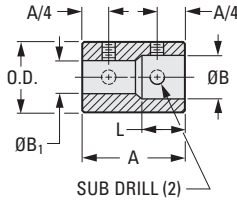


Fig. 2



INCH COMPONENT

Catalog Number	B ₁ Bore +.0005 -.0000	B Bore +.0005 -.0000	O.D.	A	L ±.010	Set Screw	Sub Drill
Fig. 1							
S5035Y-G50-1	—	.1248	5/16	.43	—	#2-56	.029
S5046Y-G50-2		.1873	3/8	.50		#4-40	.040
S5068Y-G50-3		.2498	1/2	.56		#6-32	.070
Fig. 2							
S5123Y-G50-4	.1200	.1248	1/4	.43	.210	#2-56	.029
S5134Y-G50-6	.1248	.1873	3/8	.50	.245	#2-56 / #4-40	.029 / .040
S5147Y-G50-7		.2498	1/2	.56	.275	#2-56 / #6-32	.029 / .070
S5157Y-G50-9	.1873	.2498	1/2	.56	.275	#4-40 / #6-32	.040 / .070

SHAFT COUPLINGS

> MATERIAL:

303 Stainless Steel
Brass, Zinc Plated
Aluminum, Anodized

Stainless steel socket head set screws supplied.

Other bores available on special order.

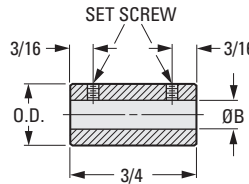
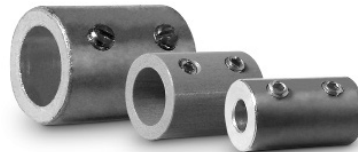


Fig. 1

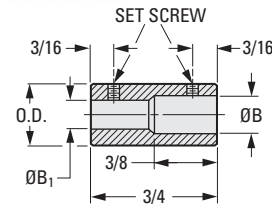


Fig. 2

INCH COMPONENT

Catalog Number			B ₁ Bore +.0005 -.0000	B Bore +.0005 -.0000	O.D.	Set Screw
Stainless Steel	Brass	Aluminum				
Fig. 1						
S5925Y-SO23-01	—	—	—	.1875	7/16	#6-32
—	S5925Y-SO22-01	S5925Y-SO22-02		.2500	1/2	
S5925Y-SO23-02	S5925Y-SO22-04	S5925Y-SO22-05		.3750	9/16	
S5925Y-SO23-03	S5925Y-SO22-07	S5925Y-SO22-08				
Fig. 2						
S5925Y-SO23-04	—	S5925Y-SO22-11	.1250	.1875	7/16	#4-40
S5925Y-SO23-05	S5925Y-SO22-13	S5925Y-SO22-14	.2500	.3750	9/16	#6-32

6-74
D820

REVISED:
05/23/23

I

R

T

1

2

3

4

5

6

7

8

9

10

11

12

13

14

15

A