

# TORQUE TUBE COUPLINGS



**> MATERIAL:**

Torque Tube - Acetal  
Split Hubs - Aluminum

PHONE: 516.328.3300 • FAX: 516.326.8827 • WWW.SDP-SI.COM



**> MISALIGNMENT COMPENSATION:**

Max. Angular Offset: 5°

**> FEATURES:**

Accommodates angular shaft misalignment.  
Clamp type hubs, no flats required on shafts,  
no set screws, does not mar shafts.  
One-piece assembly, no loose parts to assemble or adjust.

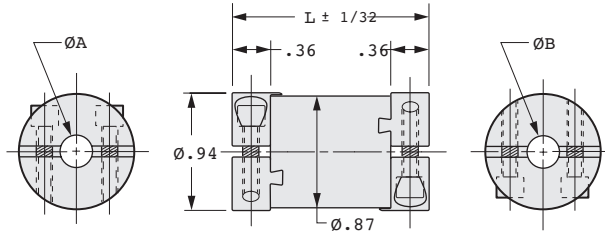


**> APPLICATIONS:**

Business machines  
Computer peripherals  
Printing equipment  
Packaging machinery  
Instrument drives  
Servomechanisms

**> SPECIFICATIONS:**

Speeds to 2000 rpm  
Standard lengths up to 3"  
Zero radial play  
Maximum Torque: 25 lbf in.



**> MOUNTING INSTRUCTIONS:**

Mount coupling on shafts. Tighten clamping screws. Do not compress the unit axially during installation. Torque Tube Couplings have an internal compression spring which preloads the ends against axial movement and backlash.

Other bores and lengths available on special order.

INCH COMPONENT			A Bore +.001 -.000	B Bore +.001 -.000
Catalog Number				
L = 1.5	L = 2.0	L = 3.0		
S59DZ6-TT030306	S59DZ6-TT030308	S59DZ6-TT030312	.1880	.1880
S59DZ6-TT030406	S59DZ6-TT030408	S59DZ6-TT030412	.1880	.2500
S59DZ6-TT040406	S59DZ6-TT040408	S59DZ6-TT040412	.2500	
S59DZ6-TT040506	S59DZ6-TT040508	S59DZ6-TT040512	.2500	.3130
S59DZ6-TT050506	S59DZ6-TT050508	S59DZ6-TT050512	.3130	
S59DZ6-TT050606	S59DZ6-TT050608	S59DZ6-TT050612	.3130	.3750
S59DZ6-TT060606	S59DZ6-TT060608	S59DZ6-TT060612	.3750	

6-72  
D820

REV:  
5/15/23 LP

