

SPLINE TYPE FLEXIBLE COUPLINGS

SDP/SI

PHONE: 516.328.3300 • FAX: 516.326.8827 • WWW.SDP-SI.COM

> MATERIAL:

- Spline - Polyurethane
- Hubs - 16, 20, 25 Series - Zinc Alloy Die Casting
- 32 Series - Sintered Metal



> MISALIGNMENT COMPENSATION:

- Max. Angular Offset: 2°
- Max. Lateral Offset: .008

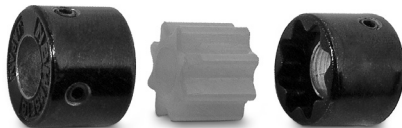


> OPERATING TEMPERATURE:

-4°F to +140°F

> FEATURES:

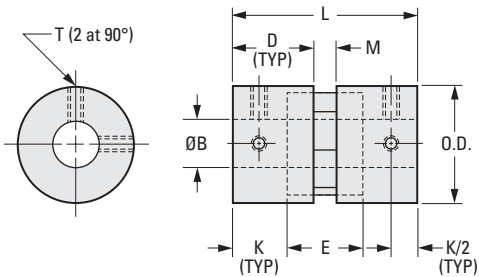
- High rpm.
- Electrically isolated.
- Dampens shock & vibration.
- No lubrication.



> BUILD YOUR OWN COUPLING:

- For Different Bore Combinations:** Select hubs and corresponding spline within the same series.
- For Hubs with the Same Bore:** Select the "Complete Coupling"

Other bore diameter combinations and bore sizes not exceeding the maximum listed below are available on special order.



Coupling Series	Rated Torque lbf in.	Max. rpm
16	4.4	24000
20	8.8	19000
25	13.3	15000
32	26.6	12000

INCH COMPONENT

Catalog Number			O.D.	B Bore +.001 - .000	L Length	D	K	E Spline Length	M	Spline Bore	T Set Screw	Max. Bore
Complete Coupling	Hub Only	Spline Only										
A 5Z28-1608	A 5D28-1608	A 5R28-16	5/8	.250	1-1/16	15/32	5/16	7/16	1/8	15/64	#4-40	.315
A 5Z28-2008	A 5D28-2008	A 5R28-20	25/32	.250 .375	1-11/32	19/32	25/64	35/64	5/32	5/16	#4-40	.394
A 5Z28-2012	A 5D28-2012											
A 5Z28-2508	A 5D28-2508	A 5R28-25	1	.250 .375	1-39/64	45/64	15/32	21/32	13/64	25/64	#6-32	.472
A 5Z28-2512	A 5D28-2512											
A 5Z28-3212	A 5D28-3212	A 5R28-32	1-1/4	.375 .500	1-57/64	53/64	9/16	25/32	15/64	15/32	#6-32	.591
A 5Z28-3216	A 5D28-3216											

6-53
D820

REV:
5/15/23 LP

1

R

T

1

2

3

4

5

6

7

8

9

10

11

12

13

14

15

16