

# DOUBLE DISK FLEXIBLE COUPLINGS

# SDP/SI

SPLIT HUB TYPE  
 ZERO BACKLASH  
 HIGH TORSIONAL STIFFNESS  
 MAINTENANCE-FREE  
 HIGH TORQUE

PHONE: 516.328.3300 • FAX: 516.326.8827 • WWW.SDP-SI.COM



**> MATERIAL:**

**Pins & Disks** - Stainless Steel  
**Hubs & Spacer** - Aluminum Alloy

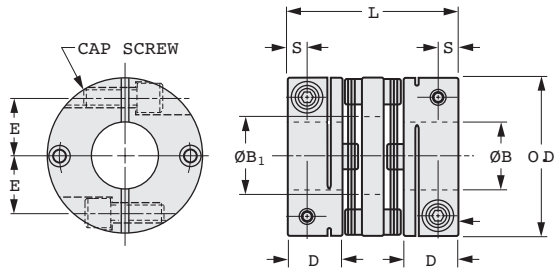
**> MISALIGNMENT COMPENSATION:**

**Max. Angular Offset:** 1.5°  
**Max. Axial Motion:** ± .02

**> SPECIFICATION:**

Recommended Tolerance on Shaft:  
 .1875 +.0000/-.0005  
 .2500 & .3750 +.0000/-.0006  
 .5000 & .6250 +.0000/-.0007  
 .7500 & 1.0000 +.0000/-.0008

Other bore diameter combinations and bore sizes not exceeding the maximum listed below are available on special order.



## INCH COMPONENT

Catalog Number	O.D.	B Bore	B <sub>1</sub> Disk Bore Dia.	S	L Length	D	E	Cap Screw	Max. Bore
S50MDD-074H18H18	.748	.1875	.335	.098	1.06	.315	.256	#2-56	.3150
S50MDD-074H25H25		.2500							
S50MDD-098H25H25	.984	.2500	.492	.138	1.22	.394	.354	#4-40	.4724
S50MDD-098H37H37		.3750							
S50MDD-126H37H37	1.260	.3750	.630	.157	1.57	.472	.433	#6-32	.5906
S50MDD-126H50H50		.5000							
S50MDD-157H50H50	1.575	.5000	.827	.197	1.73	.551	.591	#10-24	.7874
S50MDD-157H62H62		.6250							
S50MDD-196H62H62	1.969	.6250	1.024	.236	2.24	.709	.709	#10-24	.9843
S50MDD-196H75H75		.7500							
S50MDD-248H75H75	2.480	.7500	1.378	.276	2.40	.787	.945	1/4-20	1.1811
S50MDD-248H99H99		1.0000							

Coupling Series (Ref. Only)	Rated Torque lbf in.	Max. rpm	Moment of Inertia Δ oz. in. <sup>2</sup>	Static Torsional Stiffness lbf in. / deg	Max. Lateral Offset	Weight Δ oz.
S50MDD-074H...	6.20	33000	.048	30.90	.005	.64
S50MDD-098H...	8.85	25000	.148	69.51		.88
S50MDD-126H...	22.13	19000	.525	169.92	.006	2.12
S50MDD-157H...	30.98	15000	1.039	216.27		3.53
S50MDD-196H...	79.66	12000	4.428	339.85		7.41
S50MDD-248H...	110.64	10000	11.481	463.43		12.00

Δ Based on Max. Bore.

6-49  
D820

REV:  
4/27/23

- I
- R
- T
- 1
- 2
- 3
- 4
- 5
- 6
- 7
- 8
- 9
- 10
- 11
- 12
- 13
- 14
- 15
- A