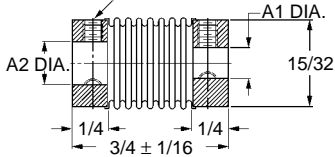
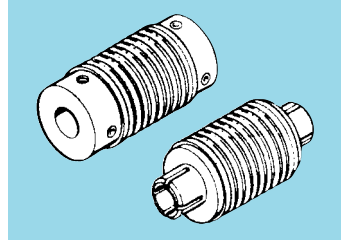


## ■ SHORT SERIES

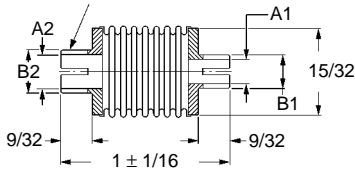
2 PC. #4-40 SOC. HD. SET SCREWS ON EACH END, 120° APART (4 SUPPLIED)



PIN TYPE



FOR CLAMPS,  
SEE INDEX



CLAMP TYPE

**MATERIAL:** Bellows – Phosphor Bronze  
Hubs – Pin Type: Brass  
– Clamp Type: Beryllium Copper  
Set Screws – Stainless Steel

**SPECIFICATIONS:** Tin plate  
Permissible angular misalignment 5°  
Zero backlash  
Available with clamp or pin hubs  
Maximum speed - 2000 rpm

Catalog Number		A1 Dia. +.0005 -.0000	A2 Dia. +.0005 -.0000	B1 Dia. +.000 -.003	B2 Dia. +.000 -.003
Pin Type	Clamp Type				
S9901Z-G404-01	S9901Z-G405-01	.1200	.1200	.187	.187
S9901Z-G404-02	S9901Z-G405-02	.1248	.1248	.187	.187
S9901Z-G404-03	S9901Z-G405-03	.1873	.1873	.250	.250
S9901Z-G404-04	S9901Z-G405-04	.2498	.2498	.312	.312
S9901Z-G404-12	S9901Z-G405-12		.1248		.187
S9901Z-G404-13	S9901Z-G405-13	.1200	.1873	.187	.250
S9901Z-G404-14	S9901Z-G405-14		.2498		.312
S9901Z-G404-23	S9901Z-G405-23		.1873		.250
S9901Z-G404-24	S9901Z-G405-24	.1248	.2498	.187	.312
S9901Z-G404-34	S9901Z-G405-34	.1873	.2498	.250	.312

Available on request: Special couplings.  
For additional information, see preceding technical data.