

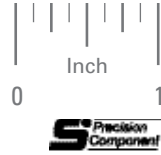
# HEAVY-DUTY SET SCREW TYPE HUB BELLOWS COUPLINGS



## > MATERIAL:

- Hubs - Brass
- Bellows - Phosphor Bronze
- Set Screws - Stainless Steel
- Finish - Tin Plate

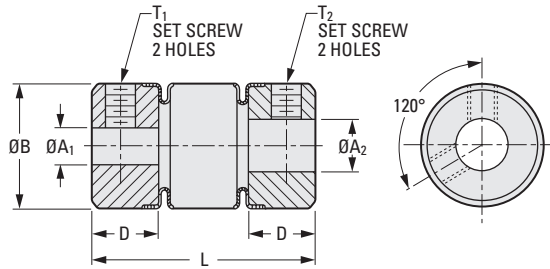
PHONE: 516.328.3300 • FAX: 516.326.8827 • WWW.SDP-SI.COM



## > MISALIGNMENT COMPENSATION:

- Max. Angular Offset: 6°
- Max. Lateral Offset: .015

Other bores, finishes available on special order.



### INCH COMPONENT

Catalog Number	A <sub>1</sub> Dia. +.0005 -.0000	A <sub>2</sub> Dia. +.0005 -.0000	B Dia.	L ± .060	T <sub>1</sub>	T <sub>2</sub>	D
S50BPH-P18718733	.1873	.1873	.669	1.035	#2-56	#2-56	.354
S50BPH-P18725033	.1873	.2498			#2-56	#4-40	
S50BPH-P25025033	.2498	.2498			#4-40	#4-40	
S50BPH-P25031233	.2498	.3123	.866	1.063	#4-40	#6-32	.354
S50BPH-P31237534	.3123	.3748			#6-32	#6-32	
S50BPH-P37537534	.3748				#6-32	#6-32	
S50BPH-P37550034	.3748	.4998	.866	1.063	#6-32	#8-32	

Catalog Number (Ref. Only)	Maximum Torque ozf in.	Maximum Axial Motion	Spring Rate for Axial Deflection lbf / in.	Torsional Deflection @ Maximum Load
S50BPH-P18718733	200	+.020 / -.040	.138	1.4°
S50BPH-P18725033				
S50BPH-P25025033				
S50BPH-P25031233	300	+.025 / -.050	.138	1.5°
S50BPH-P31237534				
S50BPH-P37537534				
S50BPH-P37550034				

13-20  
D815

REV:  
4/25/23

1

R

T

1

2

3

4

5

6

7

8

9

10

11

12

13

14

15

16