

# SQUARE HOLE SLEEVES



PLAIN  
THREADED

PHONE: 516.328.3300 • FAX: 516.326.8827 • WWW.SDP-SI.COM



► **MATERIAL:**

C.R.S. 1117 (May be Case-Hardened)

► **CONCENTRICITY:**

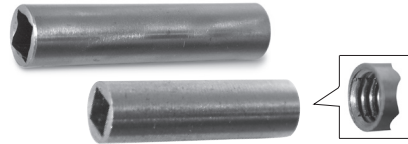
.003 T.I.R. Between O.D & Square Hole

► **SPECIFICATION:**

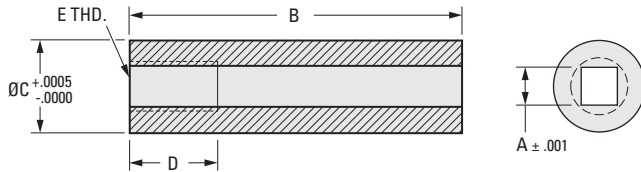
Square Hole Sleeves are available in two styles:

One with a tapped hole at one end to receive a back-up screw which we supply.

Other with a squared hole end to end without thread or back-up screw.



Sleeves also may be ordered with .015 grinding stock on O.D., if desired. Add "G" to catalog number. Tolerance is the same as on standard O.D.



## INCH COMPONENT

| Catalog Number  | Tool Bit Size | A Square | B Length | C O.D. | D Thread Depth | E Thread |
|-----------------|---------------|----------|----------|--------|----------------|----------|
| <b>Plain</b>    |               |          |          |        |                |          |
| A 7C19-P012     | 1/8           | .128     | 3/4      | .2187  | —              | —        |
| A 7C19-P018     | 3/16          | .1915    | 1-1/2    | .3125  | —              | —        |
| A 7C19-P025     | 1/4           | .255     | 2        | .4375  | —              | —        |
| A 7C19-P031     | 5/16          | .3175    | 2-1/4    | .5000  | —              | —        |
| A 7C19-P037     | 3/8           | .380     | 2-1/2    | .5937  | —              | —        |
| A 7C19-P043     | 7/16          | .4425    | 2-5/8    | .6875  | —              | —        |
| A 7C19-P050     | 1/2           | .505     | 2-3/4    | .7812  | —              | —        |
| A 7C19-P062     | 5/8           | .630     | 3-1/4    | .9375  | —              | —        |
| A 7C19-P075     | 3/4           | .755     | 4        | 1.1250 | —              | —        |
| A 7C19-P087     | 7/8           | .880     |          | 1.3125 | —              | —        |
| A 7C19-P100     | 1             | 1.008    | 5        | 1.5000 | —              | —        |
| A 7C19-P125     | 1-1/4         | 1.260    |          | 2.0000 | —              | —        |
| <b>Threaded</b> |               |          |          |        |                |          |
| A 7C19-T012     | 1/8           | .128     | 3/4      | .2187  | 1/4            | #10-32   |
| A 7C19-T018     | 3/16          | .1915    | 1-1/2    | .3125  | 7/16           | 1/4-28   |
| A 7C19-T025     | 1/4           | .255     | 2        | .4375  | 1/2            | 5/16-24  |
| A 7C19-T031     | 5/16          | .3175    | 2-1/4    | .5000  | 5/8            | 3/8-24   |
| A 7C19-T037     | 3/8           | .380     | 2-1/2    | .5937  |                |          |
| A 7C19-T043     | 7/16          | .4425    | 2-5/8    | .6875  | 5/8            | 1/2-20   |
| A 7C19-T050     | 1/2           | .505     | 2-3/4    | .7812  |                |          |
| A 7C19-T062     | 5/8           | .630     | 3-1/4    | .9375  | 1              | 3/4-16   |
| A 7C19-T075     | 3/4           | .755     |          | 1.1250 |                |          |
| A 7C19-T087     | 7/8           | .880     | 4        | 1.3125 | 1              | 1-14     |
| A 7C19-T100     | 1             | 1.008    |          | 1.5000 |                |          |
| A 7C19-T125     | 1-1/4         | 1.260    | 5        | 2.0000 | 1-1/2          | 1-1/8-12 |
|                 |               |          |          |        |                | 1-1/2-12 |

- I
- R
- T
- 1
- 2
- 3
- 4
- 5
- 6
- 7
- 8
- 9
- 10
- 11
- 12
- 13
- 14
- 15
- 16