

IDLER PULLEYS WITH NEEDLE BEARINGS

SDP/SI

1/4 & 1/2 BORE
NEEDLE BEARINGS

PHONE: 516.328.3300 • FAX: 516.326.8827 • WWW.SDP-SI.COM



> MATERIAL:

- Pulley** - Steel
- Bearing** - Needle Type

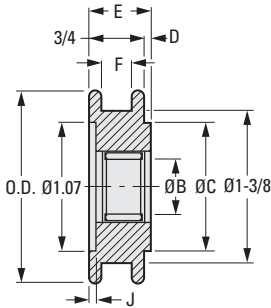


Fig. 1 Flat Belts

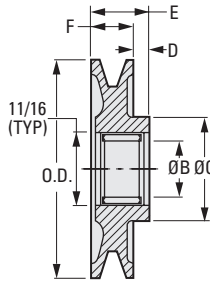
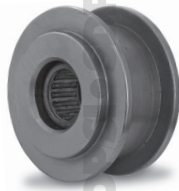


Fig. 2 "V" Belts 3/8 & 1/2 Wide

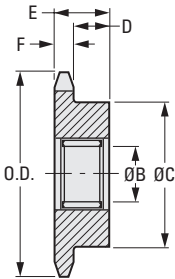
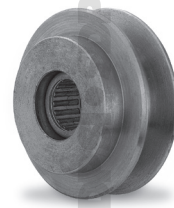


Fig. 3 Sprockets
.1475 & .250 Pitch

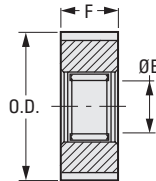
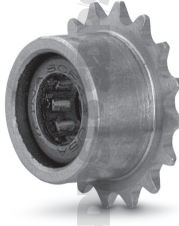
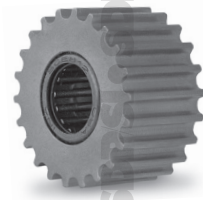


Fig. 4 Timing Pulleys 1/5 Pitch
and 3 & 5 mm Pitch HTD®



INCH COMPONENT

Catalog Number	No. of Teeth	O.D.	B Bore	F Face Width	E Length	C Hub Dia.	D Hub Proj.	J Dim.	Shaft Length (Ref.)	Belt or Chain Size
Fig. 1 - Flat Belts										
A 6Z 9-016NID	—	1.750	1/2	9/16	7/8	1-1/4	1/8	1/8	1-1/2	—
Fig. 2 - V Belts										
A 6Z 9-016NOK17	—	1.920	1/2	1/2	3/4	1-3/8	1/4	5/32	1-1/2	3/8
A 6Z 9-016NAK25		2.500		21/32	29/32					1/2
A 6Z 9-016NAK30		3.050		1-9/16	1					
Fig. 3 - Sprockets										
*A 6Z 9-008HN14	16	.808	1/4	1/16	11/32	9/16	9/32	3/64	—	.1475 Pitch
A 6Z 9-016HN25	19	1.650	1/2	7/64	3/4	1-7/32	41/64	—	1-1/2	.250 Pitch
Fig. 4 - Timing Pulleys										
A 6Z 9-01622XL	22	1.381	1/2	3/4	—	—	—	—	1-1/2	1/5" Pitch
A 6Z 9-016225H		1.334								5 mm HTD®
A 6Z 9-008283H	28	1.023	1/4	1/2	—	—	—	—	—	3 mm HTD®

*Sprocket is Stainless Steel.

NOTE: These idlers can be used with drive tighteners (see index) or with shafts having a surface hardness of Rc 58 minimum.

- I
- R
- T
- 1
- 2
- 3
- 4
- 5
- 6
- 7
- 8
- 9
- 10
- 11
- 12
- 13
- 14
- 15
- 16