



Grooved Idler Pulleys

Stock Drive Products/Sterling Instrument ■ Phone: 516-328-3300 ■ Fax: 516-326-8827

- MOLDED WITH OR WITHOUT SINTERED BEARINGS
- LIGHT-OR MEDIUM-DUTY

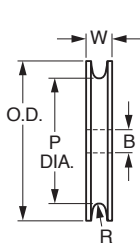


Fig. 1

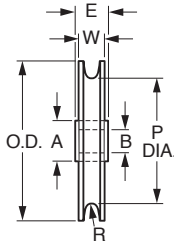
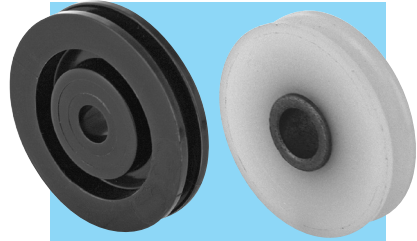


Fig. 2



MATERIAL: Acetal, Black

* Fig. 1 PLAIN – LIGHT-DUTY						
Catalog Number	P Dia. ± .02	O.D. ± .02	B Bore ± .005	W Width ± .01	R Radius (Ref.)	For Max. Cable Dia.
A 6M 9-00604	.31	.375	.128	.093	.015	1/32
A 6M 9-00804	.438	.50	.128	.125	.025	3/64
A 6M 9-01004	.50	.625	.128	.125	.015	1/32
A 6M 9-01204	.625	.75	.128	.156	.025	3/64
A 6M 9-01606	.813	1.00	.190	.17	.025	3/64
A 6M 9-02006	1.063	1.25	.190	.219	.035	1/16
A 6M 9-02408	1.25	1.50	.254	.281	.050	3/32
A 6M 9-02508	1.225	1.575	.254	.33	.095	3/16
A 6M 9-02808	1.375	1.73	.254	.281	.065	1/8
A 6M 9-03110	1.58	1.95	.316	.405	.125	1/4

MATERIAL: Pulley - Nylon
 Bearing - Sintered Bronze

* Fig. 2 WITH SINTERED BEARINGS – MEDIUM-DUTY								
Catalog Number	P Dia. ± .02	O.D. ± .02	B Bore ± .002	W Width ± .01	E Length ± .01	A	R Radius (Ref.)	For Max. Cable Dia.
A 6T 9-01204	.625	.75	.127	.156	.187	.38	.025	3/64
A 6T 9-01706	.885	1.07	.189	.219	.25	.38	.025	3/64
A 6T 9-01708	.885	1.07	.252	.219	.25	.38	.025	3/64
A 6T 9-02006	1.063	1.25	.189	.219	.25	.38	.035	1/16
A 6T 9-02008	1.063	1.25	.252	.219	.25	.38	.035	1/16
A 6T 9-02408	1.25	1.50	.252	.281	.313	.38	.050	3/32
A 6T 9-02412	1.25	1.50	.377	.281	.313	.50	.050	3/32
A 6T 9-02808	1.375	1.75	.252	.281	.313	.38	.065	1/8
A 6T 9-02812	1.375	1.75	.377	.281	.313	.50	.065	1/8