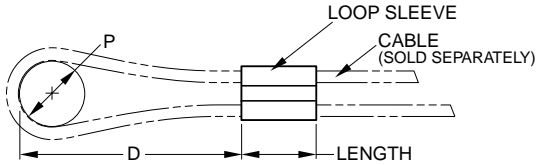




Cable Attachments

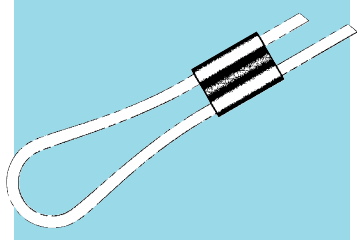
■ LOOP SLEEVES



NOTE:

"P" is pin dia. and "D" is distance from bearing point to fitting. "P" should be at least 5 times the cable dia. for guaranteed breaking strength and "D" should be at least 2.5 times "P."

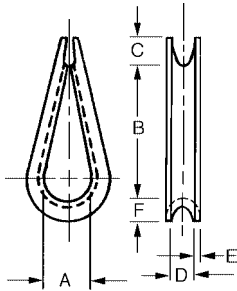
■ THIMBLES



Priced Per 10 Pieces

LOOP SLEEVES

| Catalog Number | For Cable No.'s A 6X 9-□□□ | For Stripped Cable Dia's. Ref. | Material | Approximate Length Before Swaging |
|----------------|-------------------------------|--------------------------------|-----------------------|-----------------------------------|
| A 6B 9-S015 | 024 | .015 - .022 | Brass | 7/32 |
| A 6B 9-S023 | | .023 - .026 | | 1/4 |
| A 6B 9-S027 | 034, 037, 044 | .027 - .038 | Copper Zinc Plated | 17/64 |
| A 6B 9-S039 | | .039 - .052 | | 25/64 |
| A 6B 9-S063 | 094 | 1/16 | | 21/64 |
| A 6B 9-S093 | 125 | 3/32 | | 25/64 |



NOTE:

Thimbles provide loop support at higher loads and protect cables from wear when motion is present. Some thimbles may have open or uneven ends.



MATERIAL: Stainless Steel

Priced Per 10 Pieces

THIMBLES

| Catalog Number | For Stripped Cable No.'s A 6X 9-□□□ | For Cable Dia's. Ref. | A | B | C | D | E | F |
|----------------|--|-----------------------|------|-------|------|------|------|------|
| A 6C 9-T015 | 024, 034, 037, 044 | 1/64 - 3/64 | .188 | 1/4 | 1/8 | 1/8 | .015 | 3/64 |
| A 6C 9-T047 | | 3/64 - 5/64 | .339 | 43/64 | 3/16 | 3/32 | .032 | 5/64 |
| A 6C 9-T094 | | 3/32 - 1/8 | .339 | 45/64 | 7/32 | 9/64 | .032 | 5/64 |