

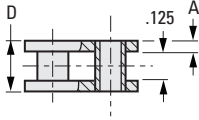
STANDARD DUTY  
HEAVY-DUTY  
SINGLE STRAND  
RIVETED

PHONE: 516.328.3300 • FAX: 516.326.8827 • WWW.SDP-SI.COM

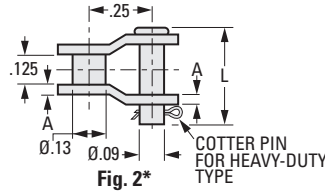


**> MATERIAL:**

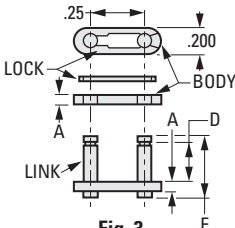
- Stainless Steel
- Hardened Steel



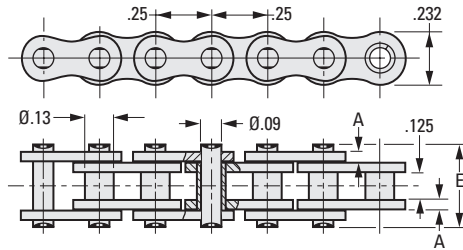
**Fig. 1**  
**Roller Connecting Link**



**Fig. 2\***  
**Heavy-Duty Type Single Offset Connecting Link**



**Fig. 3**  
**Spring Clip Connecting Link**



**INCH COMPONENT**

Catalog Number	Material	A Thickness	L Pin Length	D +.002 - .000	E	F	Tensile Load lbf	Weight Per Foot lb./ft.
<b>Roller Chain - Standard-Duty Type - Priced Per Foot</b>								
A 6Q 7-25	Hardened Steel	.03	.34	.19	.31	.33	787	.1
A 6Y 7-25	Stainless Steel						562	

Roller Chain (Ref.)	Material	Roller (Fig. 1)	Spring Clip (Fig. 3)
<b>Connecting Links - For Standard-Duty Type Roller Chain - Priced Per Piece</b>			
A 6Q 7-25	Hardened Steel	A 6Q 7-25RL	A 6Q 7-25SCCL
A 6Y 7-25	Stainless Steel	A 6Y 7-25RL	A 6Y 7-25SCCL

**INCH COMPONENT**

Catalog Number	Material	A Thickness	L Pin Length	D +.002 - .000	E	F	Tensile Load lbf	Weight Per Foot lb./ft.
<b>Roller Chain - Heavy-Duty Type - Priced Per Foot</b>								
A 6Q 7-H25	Hardened Steel	.039	.43	.21	.35	.38	1169	.107
A 6Y 7-H25	Stainless Steel						562	

Roller Chain (Ref.)	Material	Roller (Fig. 1)	Single Offset* (Fig. 2)	Spring Clip (Fig. 3)
<b>Connecting Links - For Heavy-Duty Type Roller Chain - Priced Per Piece</b>				
A 6Q 7-H25	Hardened Steel	A 6Q 7-H25RL	—	A 6Q 7-H25SCCL
A 6Y 7-H25	Stainless Steel	A 6Y 7-H25RL	A 6Y 7-H25OSCLS	—

\* To be discontinued when present stock is depleted.

2-246  
D820

- I
- R
- T
- 1
- 2
- 3
- 4
- 5
- 6
- 7
- 8
- 9
- 10
- 11
- 12
- 13
- 14
- 15
- 16