

# COMMERCIAL SHAFT/HUB CLAMPS



## COMMERCIAL REDUCED CLEARANCE SHAFT/HUB CLAMPS

PHONE: 516.328.3300 • FAX: 516.326.8827 • WWW.SDP-SI.COM

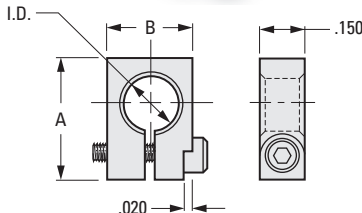
### > MATERIAL:

Hardened 416 Stainless Steel

### > SPECIFICATIONS:

Tolerances	
Decimals	± .010

Stainless Steel socket head cap screw supplied.



### INCH COMPONENT

Catalog Number	I.D.* +.002 -.000	A	B	Screw Size	Clearance Radius
S3201Y-J046	.1250	.290	.196	#2-56	.26
S3201Y-J047	.1406	.304	.210		.27
S3201Y-J048	.1562	.320	.226		.28
S3201Y-J049	.1718	.336	.242		.29
S3201Y-J050	.1875	.352	.258		.30
S3201Y-J051	.2031	.368	.274		.31
S3201Y-J052	.2187	.382	.288		.32
S3201Y-J053	.2343	.398	.304		.33
S3201Y-J054	.2500	.414	.320		.35

\* Dimensions apply before slot is made.

## COMMERCIAL SHAFT/HUB CLAMPS

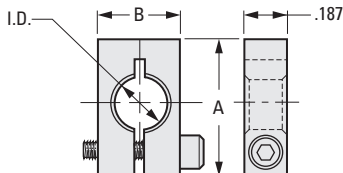
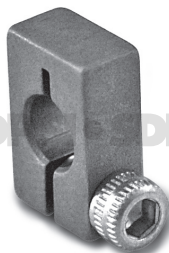
### > MATERIAL:

Hardened 416 Stainless Steel

### > SPECIFICATIONS:

Tolerances	
Decimals	± .010
Fractions	± 1/32

Stainless Steel socket head cap screw supplied.



### INCH COMPONENT

Catalog Number	I.D.* +.002 -.000	A	B	Screw Size	Clearance Radius
S3200Y-J145	.187	1/2	.312	#4-40	25/64
S3200Y-J146	.250	5/8	.375		7/16

\* Dimensions apply before slot is made.

I
R
T
1
2
3
4
5
6
7
8
9
10
11
12
13
14
15
16