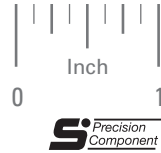


AGMA 10
.1873 BORE
20° PRESSURE ANGLE

PHONE: 516.328.3300 • FAX: 516.326.8827 • WWW.SDP-SI.COM



> MATERIAL:
303 Stainless Steel

Available on special order:
Teeth not listed, different pitch,
bore size, passivation.

See **S1268Z**- series in the part number
index for hubless gears that can be mounted
on these cluster gears and hubs.



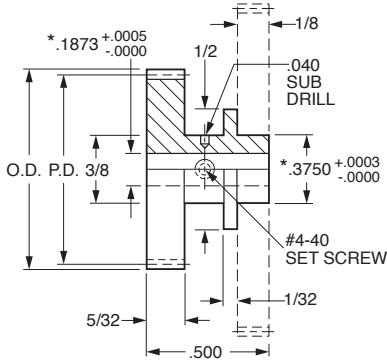
Style A



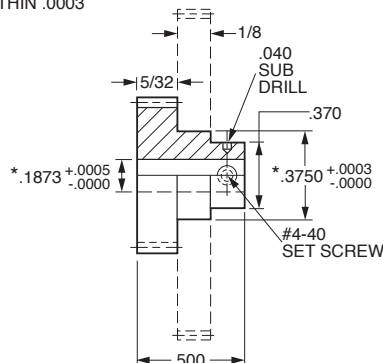
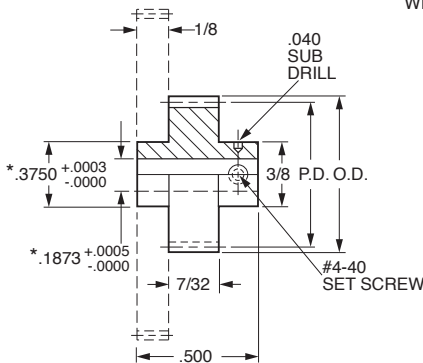
Style B



Style C



* CONCENTRIC
WITHIN .0003



INCH COMPONENT

Catalog Number			No. of Teeth	P.D.	O.D.
Style A	Style B	Style C			
S1F74Z-A064S025	S1F94Z-B064S025 Δ	S1F74Z-C064S025 Δ	25	.3906	.422
S1F74Z-A064S026	S1F94Z-B064S026 Δ	S1F74Z-C064S026 Δ	26	.4063	.438
S1F74Z-A064S028	S1F94Z-B064S028	S1F74Z-C064S028	28	.4375	.469
S1F74Z-A064S030	S1F94Z-B064S030	S1F74Z-C064S030	30	.4688	.500
S1F74Z-A064S032	S1F94Z-B064S032	S1F74Z-C064S032	32	.5000	.531
S1F74Z-A064S033	S1F94Z-B064S033	S1F74Z-C064S033	33	.5156	.547
S1F74Z-A064S040	S1F94Z-B064S040	S1F74Z-C064S040	40	.6250	.656
S1F74Z-A064S050	S1F94Z-B064S050	S1F74Z-C064S050	50	.7812	.813

Δ Hob cuts thru .3750 mounting diameter.

1-176
D820

REVISED:
6/5/23

- I
- R
- T
- 1
- 2
- 3
- 4
- 5
- 6
- 7
- 8
- 9
- 10
- 11
- 12
- 13
- 14
- 15
- 16