

AGMA 10
1/16 FACE
1/8 BORE
20° PRESSURE ANGLE

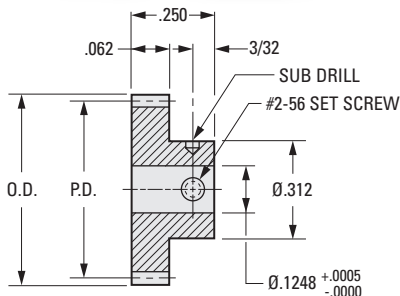
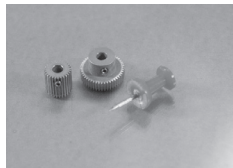
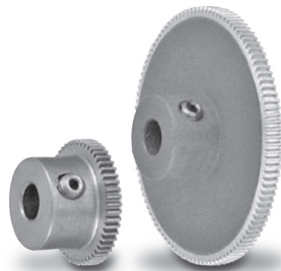
PHONE: 516.328.3300 • FAX: 516.326.8827 • WWW.SDP-SI.COM



> MATERIAL:

- 303 Stainless Steel
- 2024 Aluminum, Anodized
- T4 or T351 Aluminum Alloy, anodized before cutting

Available on special order:
14-1/2° P.A., teeth not listed, different bore size and/or material, passivation for Stainless Steel.



INCH COMPONENT

Catalog Number		No. of Teeth	P.D.	O.D.
303 Stainless Steel	2024 Aluminum Anodized			
S1023Z-120S028	S1023Z-120A028	28 Δ	.2333	.250
S1023Z-120S032	S1023Z-120A032	32 Δ	.2667	.283
S1023Z-120S036	S1023Z-120A036	36 Δ	.3000	.317
S1023Z-120S040	S1023Z-120A040	40	.3333	.350
S1023Z-120S042	S1023Z-120A042	42	.3500	.367
S1023Z-120S044	S1023Z-120A044	44	.3667	.383
S1023Z-120S045	S1023Z-120A045	45	.3750	.392
S1023Z-120S048	S1023Z-120A048	48	.4000	.417
S1023Z-120S050	S1023Z-120A050	50	.4167	.433
S1023Z-120S054	S1023Z-120A054	54	.4500	.467
S1023Z-120S060	S1023Z-120A060	60	.5000	.517
S1023Z-120S065	S1023Z-120A065	65	.5417	.558
S1023Z-120S066	S1023Z-120A066	66	.5500	.567
S1023Z-120S070	S1023Z-120A070	70	.5833	.600
S1023Z-120S072	S1023Z-120A072	72	.6000	.617
S1023Z-120S075	S1023Z-120A075	75	.6250	.642
S1023Z-120S080	S1023Z-120A080	80	.6667	.683
S1023Z-120S084	S1023Z-120A084	84	.7000	.717
S1023Z-120S090	S1023Z-120A090	90	.7500	.767
S1023Z-120S095	S1023Z-120A095	95	.7917	.808
S1023Z-120S096	S1023Z-120A096	96	.8000	.817
S1023Z-120S100	S1023Z-120A100	100	.8333	.850
S1023Z-120S110	S1023Z-120A110	110	.9167	.933
S1023Z-120S120	S1023Z-120A120	120	1.0000	1.017
S1023Z-120S126	S1023Z-120A126	126	1.0500	1.067
S1023Z-120S132	S1023Z-120A132	132	1.1000	1.117
S1023Z-120S144	S1023Z-120A144	144	1.2000	1.217
S1023Z-120S150	S1023Z-120A150	150	1.2500	1.267
S1023Z-120S156	S1023Z-120A156	156	1.3000	1.317
S1023Z-120S162	S1023Z-120A162	162	1.3500	1.367

Δ Hob cuts into hub. Hub diameter never exceeds gear O.D.

